

This Page Is Inserted by IFW Operations
and is not a part of the Official Record

BEST AVAILABLE IMAGES

Defective images within this document are accurate representations of the original documents submitted by the applicant.

Defects in the images may include (but are not limited to):

- BLACK BORDERS
- TEXT CUT OFF AT TOP, BOTTOM OR SIDES
- FADED TEXT
- ILLEGIBLE TEXT
- SKEWED/SLANTED IMAGES
- COLORED PHOTOS
- BLACK OR VERY BLACK AND WHITE DARK PHOTOS
- GRAY SCALE DOCUMENTS

IMAGES ARE BEST AVAILABLE COPY.

**As rescanning documents *will not* correct images,
please do not report the images to the
Image Problem Mailbox.**

Figure 1

Gene Cluster for Production
of Compound 2(a)

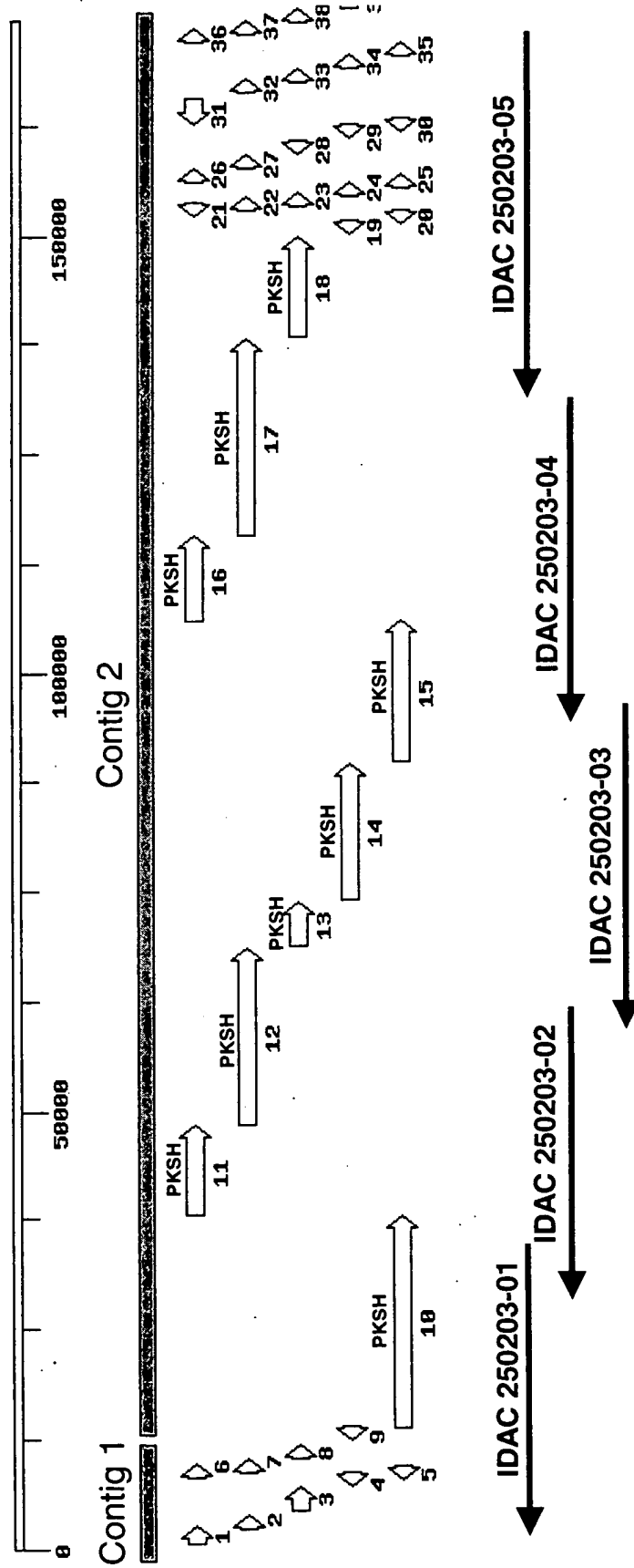


Figure 3a

```

ORF10_pat01 VLLPWALSAKTPEALRAQAR-----RLGTLIAAQP--HVTPL---DIGHSLATTRGRF
ORF10_pat02 SVLPLLI SAKSDAGLRAQSE-----QLATHLVGNP--DVP I G---DIAYSLTTGRSGL
ORF10_pat03 LPLPYVLSAKSPEALRAQAS-----VLRTHLEATD--HNGPG--SDDLAFSLATARAH
ORF10_pat04 PVVPWVLSGKGEEALRAQAR-----QLQSYVLRAP--ELRPV---DIAGSLAVGRASF
ORF10_pat05 GVMPWVLSAKSEALRVQAE-----RLRTRIA-----SDPLLQPVVDVAYSLATSRAAL
ORF11_pat01 AVL PWLTSGRSTAALRAQAA-----RLLTQOGDG--ATEPGRPLDIGYSLATTRAAL
ORF11_pat02 GTVPYVLSAKSSDALRAQAR-----QLLAVVEAAE--SPRVA---DLAYSLATSRAGL
ORF12_pat01 KALPWLLSAKGRDALRDRAA-----QLLAYAEHP--DLRPV---DIAGSLAVGRPSF
ORF12_pat02 PVLPLLVSGRTPALRAQAERLRPAATALATGTVTNSG--ALEAL---DLGYSLATSRAAL
ORF12_pat03 DFVPLMLSAKSDVALRAQAA-----SLRARLIAAP--DMRLS---DVGSTLTTGRSAF
ORF12_pat04 AVSAWPLAGKTEAGLREQAE-----RLLAHIDAHS--ELR---PVDVGHSLATGRAAF
ORF13_pat01 -VVPWVLSGKSAGALRAQAE-----RLSGFLAGASAVDVPSV---DVGWSSLASSRAGL
ORF14_pat01 GALPVVLSGRTEPALRAQAERLRPAATALATGTVTNSG--ALEAL---DLGFSQALTRAAL
ORF14_pat02 GPQPWLLSAKTRDALHDQAR-----RLHAAHAE LNP--ELSPA---DLGLSLAAGRS AF
ORF14_pat03 SSVPLIVSARGEDALRAQAR-----RLHAHVHADP--GLRAV---DLGLSLATTRSAL
ORF15_pat01 VPPLWVLSAKSPAALRAQAG-----KLHAHLTAHP--GLRPG---DIAHSLAVGRTDF
ORF15_pat02 SALPLQLAGRSAAALRAQAE-----ALSAHLT-----AHPDVPLADLDFSLATSRAF
ORF15_pat03 GSLPWLLSAKGADALRDQAA-----RLRAHAIGHP--ELSLA---DIGYALATSRTAL
ORF16_pat01 -VVPWVLSGKSAGALRAQAE-----RLSGWLAGASAAGVASV---DVGWSSLASSRAGL
ORF16_pat02 -VLPWVLTAKTEKALQGGAE-----RLLTQLT--TRSDLR LV---DVGHSLATTRTAL
ORF17_pat01 GPVPVLSGQSDAALRAQAE-----RLAAHLRAHPGLGADTGTLDLGFSLATSRSSL
ORF17_pat02 TPLPFALSGRTPAALRAQAA-----RLIGHLAPRP--EAAPA---DVALSLATTRTAL
ORF17_pat03 AALPWVLSARTPDALRAQGE-----RLLSHLETHCE--THPETVLADIGHSLTTGRALF
ORF17_pat04 RVLPFVLSAKSAGALRGQAV-----RLKAHVEASP--EVSGAGAVDVAYSLATTRAVF
ORF18_pat01 PVLWPVVSARTEEALHAQAE-----RLLAHV R-----TNPDQAPVGVALSLATGRAAL
ORF18_pat02 RVLPFVLSAKSAGALRGQAV-----RLKAHVEASP--EVSGAGAADVAYSLATTRAVF

```

```

::: * : * : : * :

```

```

ORF10_pat01 EQRAIVLGDD--REAFDALHALAEGN-----DTPSVVQGA--APGKLAFLFTGG
ORF10_pat02 ETRAILVGDADN-RTGLAAALRSLAAGE-----QAPGLVQGTV--TEGGLAFLFTGG
ORF10_pat03 EHRAVLT-ADD--PQEFREALARLADGD-----PSPRITTGAV--SDGRFAFLFTGG
ORF10_pat04 EDRAAVV--AAD--REGLLAALALADGG-----SATGAVEGSA--VGGKLAFLFTGG
ORF10_pat05 ERRAVVVATE--RDEFLAGLKALASGQ-----PAPGLVQGR--VTEGGLAFLFTGG
ORF11_pat01 EHRAVLL-GRT--EDDFAAALSALAEGA-----ESAGLVQGRV--TEGGLAFLFTGG
ORF11_pat02 DHRAALVADD--RENLTRALALAADE-----QVPGLVRGTA--TGGQVAFVFTGG
ORF12_pat01 EDRAAVV--AAD--REGLLAGLALADGG-----SATGLVKGSSQLVKGKLAFLFTGG
ORF12_pat02 EHRAVLIGTPSD-GQALASRLDALAAGE-----QVPGLVQGT--SGGGLAFLFTGG
ORF12_pat03 ERRAALV--AGG--REGLLAGLEALADGG-----SAAGLVEGSP--VSGKLAFLFTGG
ORF12_pat04 DHRAVLVAGDD--RSEFRRALAALASGE-----SVAQVVQGIARPDQVAFVFTGG
ORF13_pat01 EHRAVVLG-----DHAAGVAVASGV-----MAAGVVTGSV--VGGKTAFFVPPGG
ORF14_pat01 DRRAAVVADD--RDALLAGLALAEGR-----PSADVVEGSA--TDGKLAFLFTGG
ORF14_pat02 ERRAAVI--AAD--RDGLLAGLALADGG-----AAAGLVEGSP--VAGKLAFLFTGG
ORF14_pat03 EQRAALVAGD--RAELLRGLDALARGE-----DTAGLVRGTA--REGQVAFVFTGG
ORF15_pat01 EHRAVLT-SADG--PVGLVRLEALADSAPEDTAPADRAPGVTRGRP--VAGKLAFLFTGG
ORF15_pat02 DHRAVLVATEGTTAATAVTALDALADRR-----TAPGLVRGTASKGGRTAFLFTGG
ORF15_pat03 DRRAAVVAGD--REEFLAGLALAEGA-----TAAGLVEGSP--AGGKLAFLFTGG
ORF16_pat01 EHRAVVLG-----DHAAGVAVASGV-----MAAGVVTGSV--VGGKTAFFVPPGG
ORF16_pat02 DQRAVLIGRDRP--DYLGALTALAAGD-----TSPLL VQGA--VGGKTAFFVPPGG
ORF17_pat01 DRRAVLFGRD--DSSLADLSALAEGE-----QPAGPVLGAV--GEGKTAFLFTGG
ORF17_pat02 DRRAAVIAHD--RTELLAGLTAALAEH-----DSARLVQHTA--ADGRTAFLFTGG
ORF17_pat03 EHRAVTVAGD--RDGFRAGLALAEGR-----TAAGLIQSSSTGGRTAFLFTGG
ORF17_pat04 DHRAVVVAGD--REELLRSLAAVESEG-----AAAGVTRGAVG--GGKLAFLFTGG
ORF18_pat01 EHRAVVVATD--RETALADLALASGE-----TSARVVLGEPGARGKTAFLFTGG
ORF18_pat02 DHRAVVVAGD--REELLRALAAVESEG-----TAAGVTRGTAG--GGKLAFLFTGG

```

```

: ** : : : * : : : * :

```

Figure 3b

	M1
ORF10_pat01	SQRLGMGRELYETHPVFADALDDACWYLDQLELPL--LDVLFADEGSPEAALLHQYTAYT
ORF10_pat02	SQRLGMGRELYETYVPVFADALDAVCARMD--LEVPL--RDVLFYGAY----AGLLDETAYT
ORF10_pat03	SQRLGMGRELYEAYPVFADALDAVCAHVDAHLEVP--KDVLFYGAD----AGLLDQYAYT
ORF10_pat04	SQRLGMGRELYEAYPVFAEALDAVCAR----LELPL--KDVLFYGAD----AGLLDETAYT
ORF10_pat05	SQRLGMGRELYETYVPVFADALDAVCVR----LELPL--MDVLFYGE----RDALDETYGT
ORF11_pat01	SQRLGMGRELYEAYPVFADALDAVCAR----LELPL--KDVLFYGAD----AGLLDETAYT
ORF11_pat02	SQRLGMGRELYETYVPVFARALDAV----DARLELPM--KEVLFYGAD----ADLLNETAHT
ORF12_pat01	SQRLGMGRELYETYVPVFAQALDAVCER----LELPL--KNVLFYGT----SAALDQTSYT
ORF12_pat02	SQRLGMGRELYETYVPVFAEALDAVCAR----LELPL--KEVLFYGAD----GAALDQYAVT
ORF12_pat03	SQRLGMGRELYEAYPVFADALDAVCVR----LELPL--MDVLFYGAD----AGLLNETAYT
ORF12_pat04	SQRLGMGRELYETYVPVFADALDAVCAR----LELPL--KDVLFYGGD----ADRLNETAYT
ORF13_pat01	SQWVGMAVGLLDSSPVFAARVDECAKALEPFTDWSL--VDVLRGVEG---APSLERVDVV
ORF14_pat01	SQRPGMGRELYATYVPVFAQALDAVCER----LELPL--KDVLFYGTGAA--GAALDETAYT
ORF14_pat02	SQRLGMGRELYDTPVFADALDAVCAHVDAHLEVP--KDVLFYGAD----TGLLDQYAYT
ORF14_pat03	SQRPGMGRELYDAHVPFADALDEICGELDRHLEVP--KGVLFATE----GDLIHQYAYT
ORF15_pat01	SQRLGMGRELYETYVPVFAQALDAVCERLN--LEVPL--RDVLFYGAD----AGLLDQTSYT
ORF15_pat02	SQRLGMGRELYEAYPVFARALDAVCDR----LELPL--KDVLFYGTD----AGLLNETVYT
ORF15_pat03	SQRLAMGRELYSAHPVFAARALDAVCDG--LALDVPL--KQVLFYGS----ADLLDRTAYT
ORF16_pat01	SQWVGMAVGLLDSSPVFAARVDECAKALEPFTDWSL--VDVLRGVEG---APSLERVDVV
ORF16_pat02	SQWVGMAVALLDASPVFAARVDECAKALEPFTDWSL--RDVLRGVTG---APSLDRVDVV
ORF17_pat01	SQRLGMGRELYATHPGFARALDEVRAELDQHLEPL--FDVLFAAEGTPEADLLDETAYT
ORF17_pat02	SQRPGMGRELYETYPAFAEALDAVCAELDPHLEQPL--KEVLFYAD----GDLLNRTGRT
ORF17_pat03	SQRLGMGRELYEAYPVFARALDEVCA--LELPLPLKDVLFYGTD----TGLLNETAYT
ORF17_pat04	SQRLGMGRELYETYVPFARALDAACAR----LELPL--KDALFYGTD----AGLLGETAYT
ORF18_pat01	SQRLGMGRELYEAYPVFADALDAVCAR----LELPL--KDVLFYGAD----ARLLDETAYT
ORF18_pat02	SQRLGMGRELYETYVPFARALDAACAG----LELPL--KDALFYGAD----AGLLDETAYT
	** . * . * * * * : : : : . * : . . .

	M2	M3
ORF10_pat01	QPALFAVEVALFRLVDSWGLKPDFVAGHS	IGETIAAAHVAGVFSLEDACMLVAARGRLMQA
ORF10_pat02	QPALFAVEVALFRLVDSWGLRPDFVAGHS	IGETIAAAHVAGVLSLDDACALVEARGRLMGA
ORF10_pat03	QPALFAVEVALFRLVESWGKPDFVAGHS	IGETIAAAHVAGVFSLQDASELVFARGRLMQA
ORF10_pat04	QPALFAVEVALFRLVDSWGLRPDFVAGHS	IGETIAAAHVAGVFSLDDACALVEARGRLMGA
ORF10_pat05	QPALFAVEVALFRLVESWGVRPDFLAGHS	IGETIAAAHVAGVFSLDDACALVEARGRLMGA
ORF11_pat01	QPALFAVEVALFRLVESWGKPDFVAGHS	IGETIAAAHVAGVFSLEDACALVSARGRLMGA
ORF11_pat02	QPALFAVEVALFRLLESWGVRPDFLAGHS	IGETIAAAHVAGVFSLDDACTLVEARGRLMQA
ORF12_pat01	QPALFAVEVALFRLVDSWGLKPDFLAGHS	IGETIAAAHVAGVFSLDDACALVSARGRLMGA
ORF12_pat02	QPALFAIEVALFRLVDSWGLRPDFVAGHS	IGETIAAAHVAGVFSLEDACRLVEARGRLMQA
ORF12_pat03	QPALFAVEVALFRLVDSWGLRPDFLAGHS	IGETIAAAHVAGVLSLDDACALVEARGRLMGA
ORF12_pat04	QPALFAVEVALFRLVESWGVRPDFLAGHS	IGETIAAAHVAGVFSLDDACALVEARGRLMQA
ORF13_pat01	QPALFAMVSLAEVWRAAGVRPGAVIGH	QGEIAAACVAGILSLEDAARVVALRSQAIGR
ORF14_pat01	QPALFAVEVALFRLVDSWGLKPDFLAGHS	IGETIAAAHVAGVFSLEDACRLVEARGRLMQA
ORF14_pat02	QPALFAVEVALFRLVDSWGLRPDFLAGHS	IGETIAAAHVAGVFSLQDASELVVARGRLMQA
ORF14_pat03	QPALFAVEVALFRLLESRGVQPDFLAGHS	IGETIAAAHVAGVFSLQDASELVVARGRLMQA
ORF15_pat01	QTALFAVEVALFRLVDSWGLKPDFLAGHS	IGETIAAAHVAGVFSLEDACALVSARGRLMGA
ORF15_pat02	QPGLFAVEVALFRLLESWGKPDFLAGHS	IGETIAAAHVAGVLSLDDVACALVEARGRLMGA
ORF15_pat03	QPALFAVEVALFRLVDSWGLKPDFLAGHS	IGETIAAAHVAGVLSLDDACTLVAARGRLMQA
ORF16_pat01	QPALFAMVSLAEVWRAAGVRPGAVIGH	QGEIAAACVAGILSLEDAARVVALRSQAIGR
ORF16_pat02	QPALFAMVSLAEVWRAAGVRPDAVIGH	QGEIAAACVAGILSLEDAARVVALRSQAIGR
ORF17_pat01	QSALFAVEVALFRQLEQWGVGADFLIGH	IGELAAAHVSGVFTLADAACKLVAARGRLMQA
ORF17_pat02	QPALFALETALYRLVDSWGVRPDFVAGHS	IGETIAAAHVAGVLSLDDACTLVAARGRLMQE
ORF17_pat03	QPALFAVEVALFRLVDSWGLKPDFLAGHS	IGETIAAAHVAGVLSLEDACALVSARGRLMGA
ORF17_pat04	QPALFAVEVALFRLLESWGVRPDFLAGHS	IGETIAAAHVAGVLSLDDACTLVEARGRLMQA
ORF18_pat01	QPALFAVEVALFRLVDSWGLKPDFLAGHS	IGETIAAAHVAGVFSLEDACALVSARGRLMGA
ORF18_pat02	QPALFAVEVALFRLLESWGVRPDFLAGHS	IGETIAAAHVAGVLSLDDACTLVAARGRLMQA
	* . . * * * : : * . * : . . : * * * * * : * * : * * * * * : * * : : *	

Figure 3c

```

ORF10_pat01 LPAG-GVMIALQASEDEVLP LLT----DRVSIAAINGPQAVVIAGDEDAAAAIAETFQAA
ORF10_pat02 LPGG-GVMIAVQAPEAEVLP LLT----ERVSTAAINGPQSVVIAGDEADAVAIVESFTG-
ORF10_pat03 LPTG-GVMIAVQASEDEVLP LLT----DRVSIAAINGPQSVVIAGDEADAVAIAESFTD-
ORF10_pat04 LPAG-GVMIAVQASEDEVLP LLT----DRVSIAAINGPRSVVIAGDEADAVAIVESFTG-
ORF10_pat05 LPTG-GVMIAVQASEDEVLP LLT----ERVSTAAINGPQSVVIAGDEADAVAIVESFTG-
ORF11_pat01 LPAG-GVMIAVQASEAEVLP LLT----DRVSIAAINGPQSVVIAGDEADAVAIAESFAD-
ORF11_pat02 LPTG-GVMIAVQASEDEVLP LLT----GQVSTAAINGPQSVVIAGDEADAVAIAESFTD-
ORF12_pat01 LPGG-GVMIAVQASEDEVLP LLT----DRVSIAAINGPQSVVIAGDEADAVAIAESFAD-
ORF12_pat02 LPGG-GVMIAVQASEDEVLP LLT----DRVSIAAINGPQSVVIAGDEADAVAIAESFTG-
ORF12_pat03 LPAG-GVMIAVQASEDEVLP LLT----DRVSIAAINGPQSVVIAGDEADAVAIVESFTG-
ORF12_pat04 LPTG-GVMIAVQASEAEVLP LLT----ERVSTAAINGPQSVVIAGDEADAVAIVDAFND-
ORF13_pat01 VLAGLGGMVSVPLPAKAVRELIAPWGEGRISVAAVNGPSSVVVSGEAAALDELLVSCSE
ORF13_pat01 LPTG-GVMIAVEASEDEVLP LLT----DWVSTAAVNGPSSVVVSGEDDAAVAIAEFAAQ
ORF14_pat02 LPTG-GVMIAVQASEDEVLP LLT----DRVSIAAINGPQSVVIAGDEADAVAIAESFTG-
ORF14_pat03 LPTG-GVMIAVQASEDEVLP LLT----DRVSIAAINGPQSVVIAGDEADAVAIAESFTD-
ORF15_pat01 LPGG-GVMIAVQASEDEVLP LLT----DRVSIAAINGPQSVVIAGDEADAVAIAESFAD-
ORF15_pat02 LPGG-GVMIAVQASEDEVLP LLT----DRVSIAAINGPRSVVIAGDEADAVAIVESFTD-
ORF15_pat03 LPTG-GVMIAVEASEDEVLP LLT----DRVSIAAINGPQSVVIAGDEADAVAIAESFTG-
ORF16_pat01 VLAGLGGMVSVPLPAKAVRELIAPWGEGRISVAAVNGPSSVVVSGEAAALDEMLASCESE
ORF16_pat02 VLAGLGGMVSVPLPAKAVRELIAPWGEDRISVAAVNGPSSVVVSGETAALDELLASCESE
ORF17_pat01 LPAD-GAMIAVEATEDEVLP LLT----GRVSTAAVNGPSSVVVSGEDAATAALAEATLRAR
ORF17_pat02 LPEG-GAMIALTATEDEVLP LLTLAGH-EDRIGIAAVNSASSVVISGEEGLALEIAEFERR
ORF17_pat03 LPGG-GVMIAVQASEGEVLP LLT----DRVSIAAINGPQSVVIAGDEADAVAIVESFSD-
ORF17_pat04 LPTG-GVMIAVQASEAEVLP LLT----DRVSIAAINGPQSVVIAGDEADAVAIVESFSG-
ORF18_pat01 LPAG-GVMIAVQASEDEVLP LLT----ARVSTAAINGPQSVVIAGDEADAVAIVESFTG-
ORF18_pat02 LPTG-GVMIAVQASEDEVLP LLT----DRVSIAAINGPQSVVIAGDEADAVAIVESFSG-
: . * *::: . * *::: :.***:.. **:***:

```

M4

```

ORF10_pat01 GRKTKRLTVSHAFHSPHMDAMLEEFRLVAQVLDYAKPTLPVVSLLTGTATTAPAEATPAY
ORF10_pat02 -RKSRLTVSHAFHSPHMDGMLDFRAVAEGLSYEAPRIPVVSNTLGTALVS-DEMGSAEF
ORF10_pat03 -RKSRLTVSHAFHSPHMDGMLDAFREIAEGLSYEPSRIPVVSNTLGTALVS-DEMGSAEF
ORF10_pat04 -RKSRLTVSHAFHSPHMDGMLDFRAVAEGLSYEAPRIPVVSNTLGTTLVT-DEMGSAEF
ORF10_pat05 -RKSRLTVSHAFHSPHMDGMLADFRKVAEGLSYEAPRIPVVSNTLGTALVT-DEMGSADF
ORF11_pat01 -RKSRLTVSHAFHSPHMDGMLDFRRLVAEGLSYEAPRIPVVSNTLGTALVS-DEMGSAEF
ORF11_pat02 -RKSRLTVSHAFHSPHMDGMLADFRKVAEGLVYENPRIPIVSNLTGTTLVT-DEMASADF
ORF12_pat01 -RKSRLTVSHAFHSPHMDGMLDFRVVAEGLSYEAPRIPVVSNTLGTALVS-DEMGSADF
ORF12_pat02 -RKSRLVSHAFHSPHMDGMLDFRAVAEGLSYEAPRIPVVSNTLGTALVS-DEMSSAEF
ORF12_pat03 -RKSRLVSHAFHSPHMDGMLDFRVVAEGLSYDAPRIPVVSNTLGTALVT-DEMGSADF
ORF12_pat04 -RKSRLVSHAFHSPHMDGMLADFRKVAEELS YEAPRIPVVSNTLGTALVT-DEMGSADF
ORF13_pat01 GVRAKRIADVYASHSAQVELLREELAELLAPIVPRAAEV PFLSTVTGEWVRGPELDGG-Y
ORF14_pat01 GRKTKKLTVSHAFHSPHMDGMLDAFRVTAQGLSYGTPRIPVVSNTLGTALVT-DEMGSADF
ORF14_pat02 -RKSRLTVSHAFHSPHMDGMLDFRAVAEGLSYEAPRIPVVSNTLGTALVIS-DEMGSAEF
ORF14_pat03 -RKSRLTVSHAFHSPHMDGMLADFRKVAEGLVYENPRIPIVVSNTLGTALVT-DEMGSADF
ORF15_pat01 -RKSRLTVSHAFHSPHMDAMLEDFRAVAEGLSYEAPRIPVVSNTLGTALVS-DEMGSADF
ORF15_pat02 -RKSRLTVSHAFHSPHMDGMLDAFREIAEGLSYEAPRIPVVSNTLGTALVS-DEMGSADF
ORF15_pat03 -RKSRLTVSHAFHSPHMDGMLDAFREVAEGLSYGTPRIPVVSNTLGTALVT-DEMRSDF
ORF16_pat01 GVRAKRIADVYASHSAQVELLREELAELLAPIVPRAAEV PFLSTVTGEWVRGPELDAG-Y
ORF16_pat02 GVRAKRIADVYASHSAQVELLREELAELLAPIVPRAAEV PFLSTVTGEWVRGPELDGG-Y
ORF17_pat01 GRRTKRLTVSHAFHSPHMDGMLDAFREVAESVAYAPPVPIPIVSNLTGASVTAEIICADY
ORF17_pat02 GRRTKRLTVSHAFHSPHMDGMLDAFREVAESLTYRAPAIPVVSNTLGTAGVAG-DELRTAEH
ORF17_pat03 -RKSRLTVSHAFHSPHMDGMLDFRAVAEGLSYGAPRIPVVSNTLGTALVS-DEMGSADF
ORF17_pat04 -RKSRLTVSHAFHSPHMDGMLAGFRKVAESL SYEAPRIPVVSNTLGTALVT-DEMGSADF
ORF18_pat01 -RKSRLTVSHAFHSPHMDGMLDFRVVAEGLSYEAPRIPVVSNTLGTALVS-DEMGSADF
ORF18_pat02 -RKSRLTVSHAFHSPHMDGMLAGFRKVAESL SYEAPRIPVVSNTLGTALVT-DEMGSADF
:***:***:***:***:***:***:***:***:***:***:***:***:***:***:***:***:***:***:

```

Figure 3d

```

ORF10_pat01 WVRHVRDAVRYLDGVRTLHQGRVTRTFLELGPDAVLTAQAQDCVDP-----QGAAAFAPALR
ORF10_pat02 WVRHVREAVRFLDGMRVLEAAGVTTYVELGPGGVLSALAQECVSG-----DGAAFVPLR
ORF10_pat03 WVRHVREAVRFLDGIRTLEAAGVTKYVELGPDGVL SAMAQDCVSG-----EGSVFIPVLR
ORF10_pat04 WVRHVREAVRFLDGIRALEAAGVTTYVELGPGGVLSALAQECVSG-----DGAAFVPLR
ORF10_pat05 WVRHVREAVRFLDGIRTLEAAGVTKYVELGPDGVL SAMAQECVSG-----EGSVFIPVLR
ORF11_pat01 WVRHVREAVRFLDGIRTLEAAGVTKYVELGPDGVL SAMAQDCVSG-----EGSVFIPVLR
ORF11_pat02 WVRHVREAVRFLDGIRALESRGVTTYIELGPDGVL SAMAQDCVSG-----EGSVFIPVLR
ORF12_pat01 WVRHVREAVRFLDGIRTLEAAGVTKYVELGPDGVL SAMAQDCVSG-----EGSVFIPVLR
ORF12_pat02 WVRHVREAVRFLDGIRALEAAGVTTYVELGPGGVLSALAQECVSG-----DGAAFVPLR
ORF12_pat03 WVRHVREAVRFLDGIRALEAAGVTTYVELGPDGVL SAMAQECVTE-----GGAAFVPLR
ORF12_pat04 WVRHVREAVRFLDGIRALEAAGVTYVELGPDGVL SAMAQECVSG-----EGAAFPALR
ORF13_pat01 WFNLRRTVELEEATRTLLEQGFVGVFVSSPHPVLSVGMQETVEDAG---REAAVLGSRLR
ORF13_pat02 WVRHVREAVRFLDGIRALEAAGVTTYVELGPGGVLSALAQECVSG-----DGAAFVPLR
ORF14_pat01 WVRHVREAVRFLDGIRTLEAAGVTKYVELGPDGVL SAMAQDCVSG-----EGSVFIPVLR
ORF14_pat02 WVRHVREAVRFLDGIRALEAAGVTTHIELGPDGVL SAMAQECVSG-----EDTVFVPLR
ORF14_pat03 WVRHVREAVRFLDGIRALEAAGVTTYVELGPDGVL SAMAQDCVSG-----EDTVFVPLR
ORF15_pat01 WVRHVREAVRFLDGIRALTERNVVHFVVELGPDGVL SAMAQDCPSA-----DTAAFPVPLR
ORF15_pat02 WVRHVREAVRFLDGIRALEAAGVTTYVELGPDGVL SAMAQECVSG-----DGAAFVPLR
ORF15_pat03 WVRHVREAVRFLDGIRTLEDAGVTTYIELGPGGVLSAMGQSCVTR-----DDAFLPALR
ORF16_pat01 WFNLRRTVELEEATRTLLEQGFVGVFVSSPHPVLSVGMQETVEDAG---REAAVLGSRLR
ORF16_pat02 WFNLRRTVELEEATRTLLEQGFVGVFVSSPHPVLSVGMQETVEDAG---RDAAVLGSRLR
ORF17_pat01 WVRHVREAVRFLDGIRALEAAGVTTYVELGPGGVLSALAQECVSG-----DGAAFVPLR
ORF17_pat02 WVRHVREAVRFLDGIRTLEAAGVTTYVELGPGGVLSALAQECVSG-----DGAAFVPLR
ORF17_pat03 WVRHVREAVRFLDGIRALEAAGVTTYVELGPGGVLSALAQECVSG-----DGAAFVPLR
ORF17_pat04 WVRHVREAVRFLDGIRALEAAGVTTYVELGPGGVLSALAQECVSG-----DGAAFVPLR
ORF18_pat01 WVRHVREAVRFLDGIRALEAAGVTTYVELGPGGVLSALAQECVSG-----DGAAFVPLR
ORF18_pat02 WVRHVREAVRFLDGIRALEAAGVTAYVELGPDGVL SAMAQECVSG-----EGAAFPALR
* . : * : * . : . : * . : * : * : . : . **

```

```

ORF10_pat01 SGRPEAATVLNAVAHAHVRAETDWAFFAGTGAQRVDLPTYAFQRQRWYWM--
ORF10_pat02 SGRPEAETAVTALAQAHVVRGVDVDWAFFSGTGVQRVDLPTYAFQRQRFWP--
ORF10_pat03 KARPEAESVTTALASAHVHGIPVDWQAYFAGTGAQRVDLPTYAFQRQRWYWM--
ORF10_pat04 SGRSEAETAVTALAQAHVVRGVDVDWAFFAGTGAERVLDLPTYAFQRQRWYWM--
ORF10_pat05 SGRPEAESVTTALAQVHVVRGIAVDWQAYFAGTGAQRVDLPTYAFQRQRWYWM--
ORF11_pat01 KARPEAESVTTALATAHVHGIPVDWQAFYAGTGAQRVDLPTYAFQHERWYWM--
ORF11_pat02 AARPEAESVTTALATAHVHGIPVDWQAFYAGTGAQRVDLPTYAFQHERWYWM--
ORF12_pat01 KARPEAETVATALASAHVHGIPVDWQAFYAGTGAQRVDLPTYAFQRQRWYWM--
ORF12_pat02 SGRSEAETVATALASAHVHGIPVDWQAFYAGTGAERVLDLPTYAFQRQRWYWM--
ORF12_pat03 KGRPEAETVATALASAHVHGIPVDWQAFYAGTGAERVLDLPTYAFQRQRWYWM--
ORF12_pat04 KGRPEAETITTAALAHVHGIPVDWQAFYAGTGAQRVDLPTYAFQRQRWYWM--
ORF13_pat01 RGEGLERFWLSLGEAVRGGVVDWHAFFAGTGAQRVDLPTYAFQSRFRWPEA
ORF14_pat01 TGRPEASSLTAAVAGAHVVRGLSPDWTVRFAGTGAQRVELPTYAFQRELWYWM--
ORF14_pat02 KARPEAESVTTALATAHVHGIPVDWQAFYAGTGAERVLDLPTYAFQRQRWYWM--
ORF14_pat03 PGRPEAETVTTALARVHVGVVDWQAFYAGTGAQRVDLPTYAFQRQRWYWM--
ORF15_pat01 KGRSETGSLTDALARLHVGVVDWQAFYAGTGAQRVDLPTYAFQRQRWYWM--
ORF15_pat02 SGRPEAESVTTALAQAHVVRGIAVDWQAFYAGTGAQRVDLPTYAFQRQRWYWM--
ORF15_pat03 ADRSEEETLTSAVARAHLRGITVDWQAFYAGTGAERVLDLPTYAFQRQRWYWM--
ORF16_pat01 RGEGLERFWLSLGEAVRGGVVDWHAFFAGTGAERVLDLPTYAFQSRFRWPEA
ORF16_pat02 RGEGLERFWLSLGEAVRGGVVDWHAFFAGTGAERVLDLPTYAFQSRFRWPEA
ORF17_pat01 GDRPEAAAFATAVAQAHVHGIPVDWQAFYAGTGAERVLDLPTYAFQRELWYWM--
ORF17_pat02 RDRGEAEALTAATAHVHGIPVDWQAFYAGTGAERVLDLPTYAFQRQRWYWM--
ORF17_pat03 AGRDEAETVLSALAAHVVRGIPVDWQAFYAGTGAQRVDLPTYAFQRQRWYWM--
ORF17_pat04 KGRPETETITTAALAHVHGIPVDWQAFYAGTGAERVLDLPTYAFQRQRWYWM--
ORF18_pat01 SGRSEAESVTTALAQAHVVRGIAVDWQAFYAGTGAERVLDLPTYAFQRQRWYWM--
ORF18_pat02 KGRPEAETITTAALAHVHGIPVDWQAFYAGTGAERVLDLPTYAFQRQRWYWM--
. : . : * ** : . . : * * * * * : *

```

Figure 4

```

ORF10_pDH03      IGLGDAGHPLLGAVALADSEGVLFTGRLSLDTHPWLADHTILGSVLLPGTAFVDLAIIRA
ORF11_pDH01      AGLDPAGHPLLGAAVTLAGSDSVLFTGRLSLRTQPWLADHTVSGTTVLLPGAAFVELAVRA
ORF12_pDH01      AGLLEEAGHPLLGAAVPLADSEGFLFTGRLGRTSHPWLADHAVMDTVLLPGTAFVDLAVRA
ORF12_pDH04      AGIGSAGHPLLGAAVELPDSGFLFTGRLSLRTHPWLADHVVDTVVVVPGAAFVELAVRA
ORF14_pDH02      IGLDDTAHPLL SAGVALPESDGMVFAGRLALSTHAWLADHAILGSVLLPGTAFVELATRA
ORF14_pDH03      AGLDAADHPLLGATVSLPGSDGLVLTGRLALSTHPWLSDHTVMDTVLLPGTAFVELALRA
ORF15_pDH01      AGLGAAGHPLLGAVALADLDGFLYTGRLSLDTHPWLADHAVMGSVLLPGTAFVELAIRA
ORF15_pDH02      LGLAAAGHPLLGAAVTLADADGCVLTGRLSLRTHPWLADHAVMGSVLLPGTALVELALHA
ORF15_pDH03      AGLGSAGHPLLGAAVELPDSGFLFTGRLSLRTHPWLGDHRVAGTVLLPGAALLELAVRA
ORF17_pDH01      AGIGAADHPLLGAALADADGHLFTGRLSLATHPWLADHTVMDTVLLPGTAFVELALQA
ORF17_pDH02      AGMGAHHPLLGAVALADGEGFLFTGRLSLDTHPWLADHAVMGNVLLPGTAFVELAIRA
ORF17_pDH03      AGLGATDHPLL SAAVELPDSGFLFTGRLSLATHPWLADHAVLGSVLLPGTAFVELALRA
ORF17_pDH04      FGLGATDHPLL DATIELPDSGFLFTSRLSLDTQPWLADHAVLGSVLLPGTAFVEIAVRA
ORF18_pDH01      AGLRSADHPLL GASVALADAEGLLL TGRLSLDTHPWLADHAVAGTVLLPGTAFVELALRA
ORF18_pDH02      AGLGAAEHPLLGAAVELPDSGLLLTGRLSLLSHPWLADHAVAGTVLLPGTAFVELALHA
* : : ****.* : * . : : ** . : : **.* : : . . . : * : * : * : * : *

```

```

#
ORF10_pDH03      GDQVGC DVVEELTLEAPLVVPPQRGGVQLQLVVEAP--SGPGQRPF SVHS
ORF11_pDH01      GDQAGCERVEALVLDAPLALPAEGAVRVQVLVEAP--DEQGRRPFTVSS
ORF12_pDH01      GDQVGC DVVEELTLEAPLVLPERGAVQIQMHV GADADGTGRRTFTLSS
ORF12_pDH04      GDEVGCEEVEELVLEAPLVLPEKGAVQLRLSVGGA--DDQGRRSVHVHS
ORF14_pDH02      GDQVGC DYLEELTLEAPLVLPEHGGVQLRVVWGAA--DESGRRPFALHS
ORF14_pDH03      GELVGC GAVEELALEAPLTLADQGA VQFLAVDAP--DGAGRRTLTHS
ORF15_pDH01      GDQVGC DLLEELTLHAPLVLPPAGGVQVQLWVGAP--DATGRRTLGVHS
ORF15_pDH02      GERVGTRALDELTLQAPLILPNEGAVQLQVVVGAP--DAAGHRTVAVYS
ORF15_pDH03      GDHAGCDLLEDL TLEAPLVLPEAGGVQLRLVVAEP--DASRRRVFHIYS
ORF17_pDH01      GDHTGCDLDEL TLEAPLVLPPHGGVQIQ LAVGAP--DAEGRRSLTHS
ORF17_pDH02      GDQAGCDLLEEL TLEAPLILAPQAAARLQIVVGAP--DGSGRRTLDVYS
ORF17_pDH03      GDQVGC DLIDELTLEAPLVLPPHGGVQLRLAVAAA--DATGRRTLAFHS
ORF17_pDH04      GDQVGC DVLEELTLEAPLVVPERGGVQLRLTVAAA--DESGRRGLSLYS
ORF18_pDH01      GDQVGC DLIDELTLAAPLVLPEQGGVELQITVAAP--DESGRRSVAFHS
ORF18_pDH02      GQRVGSGLLEEL TLEAPLVLPERGALQLRV SVAAP--DEAGRRALHVHS
* : .* : : *.* *** : . . . : * . . : * . . : * . . : *

```

Figure 5

ORF17_pER02
AAF71776_mod05 | NYST
AAF71767_mod15 | NYST

QLAVRRGTVHAPRLARVPAATPLTPPPGESAWRMDIEDKGTLDHLLTVSPSPESAAPLEPG
QLALRDGGVLAARLARFDTAALTPPAD-RAWRLDSTAKGSLNGLALTPYPAALAPLTGH
QAVVREGTVRVGRLARLDSGRGLVPPPG-TPWRLGSRKAGSLDGLALLPHPEARPLTGH
* .:* * * * . ***** .: . * .***. .**:. **.*: *:* * * : **

ORF17_pER02
AAF71776_mod05 | NYST
AAF71767_mod15 | NYST

QVRVAVRAAGLNFRDVLNALGMYPG-DPGLMGSEGAGIVVETGPGVTGLAPGDRVMGMLP
EVRVEVRAAGLNFRDVLNALGMYPGDDVGSFGSEAAGVVVEVGPEVTGLAPGDQVMGMIT
EVRVGIRAAGLNFRDVLNALGMYPG-DAGLFGSEAAGVVVEVGPEVTGLAPGDRVMGMLF
:*** :***** * * :***.***.***. ** *****:****:

ORF17_pER02
AAF71776_mod05 | NYST
AAF71767_mod15 | NYST

GSFGPLAVVDRRMIAPMPEGWTFEAASVPIVFM TAYYALHDLAGLQGGESLVVHAAAGG
GSFGSLAVDDARRLARLPEDWSWETGASVPLVFLTAYYALKELGGLRAGEKVLVHAGAGG
GGFGPLGIADARLLTPVPADWSWETGASVPLVFLTAYYALKELGGLRAGEKVLVHAGAGG
* .**.*.: * * :. :* .*: . *****:**.*****:.*.***.***.***.***

ORF17_pER02
AAF71776_mod05 | NYST
AAF71767_mod15 | NYST

VGMAAVQLARHWGADVATASPAKWDTLRGLGLGDDRIASSRTLD FEETFRTATGGRGVD
VGMAAIQIARHVGAEVFATASEGKWDVLRSLGVADDH IASSRTLD FEAAFAEVAGDRGLD
VGMAAIQIARHVGAEVFATASEGKWDVLRSLGVADDH IASSRTLD FEAAFAEVAGDRGLD
:***:.*:*** **.*:*** * .***.***.***.***.***.***.***.***.***.***.***

ORF17_pER02
AAF71776_mod05 | NYST
AAF71767_mod15 | NYST

VVLDSLAREFVDASLRLLPRGGRFVEMGKTDVRS PQDVADAHPGVSYQAFDLTEAGLDRI
VVLNSLAGDFVDASMRLLGDGGRFLEMGTDIRAADSVPD---GLSYQSFDLAWVVPETI
VVLNALSGEFVDASMRLLGDGGRFLEMGTDIRAADSVPD---GLSYHSFDLGMVDPEHI
:.*: :**:*** *****:*****:*.:.*. * *:*:*:*** . : *

ORF17_pER02
AAF71776_mod05 | NYST
AAF71767_mod15 | NYST

QEMLT ELLTLFRSGALRPVPSAWDLRQAPEAFRYLSQARHV GKIVLTL P
GTMLAELMDLFR TGALRPLPVRTWDVVRHAKDAFRFMSMAKHIGKIVLTL P
QRMLLDLVELFDRGALAALPVRSDVRRAGEAFRFMSLAQHIGKIVLTV P
** :.*: ** *** .:* :**.*: * :***:* * *:*:*****:*

Figure 7

ORF10_pAC00	SAALRDAAPD TLD PHRPFLDLGFD	SLAAVDLHARLVAGTGLRRLPVTLAFDHTPPAHLARHLH
ORF10_pAC01	AAVLGHGSDAVGAERAFKELGFD	SLTSVELRNRLGAATDLRRLPTTLVYDYPTSAALAEYLR
ORF10_pAC02	AAVLGHAGVENVGAGRAFKELGFD	SLMAVELRNRLIGSATLRLPATLIYDHTPSAALAEFLR
ORF10_pAC03	AEVLGHTDARAVIDADRAFKEGFD	SLTAVELRNVLKAATGLRLSPTLVFDYPTPVALARHLL
ORF10_pAC04	AAVLGHGGSEAVGAERAFKELGFD	SLTAVELRNRLGAATGVRLPATLIFDYPTATALAAYLR
ORF10_pAC05	AVVLGHGGATAVEAARAFKELGFD	SLTAVELRNRLSTATGLRRLPASLVFDYPTPAALAAHIR
ORF11_pAC01	ASVLGHASAEQVDPARAFKDLGFD	SLTAVELRNRLGAATGLRRLPTTLVFDHTPTALVRHLR
ORF11_pAC02	ATALGHTSADAVAAERAFKDLGFD	SLTAVELRNRLGAACGLRRLPSSLVFDYPNPQALTRHLL
ORF12_pAC01	AAALGYPGPSAVEPGRSFKELGFD	SLTAVELRNRLG DATGRRLPATLVFDYPTATALAGYLR
ORF12_pAC02	AEVLGHSGAEDIEAGRAFREIGFD	SLTAVELRNRLGAAAELRRLPATLVYDYPTPAALAVHLR
ORF12_pAC03	AAVLGHAGVESIGAARAFKELGFD	SLTAVELRNRLGAVTGLRRLPATLIYDYPTSGALAEYLR
ORF12_pAC04	AAVLGYGSAEHIGGEQAFKELGFD	SLTAVELRNRLGAAGGLRRLPATLIYDYPNPAALAQHLL
ORF13_pAC01	AAVLGHADLAAVEAGRAFKEGFD	SLTSVELRNRLGAVSGLKLPASLVFDHTPPAAVAFLR
ORF14_pAC01	AAVLGYAGPESVDPGSAFRDLGFD	SLTAVEIRNLLTSRTGLRRLPATLIFDYPNSLSLAFLQ
ORF14_pAC02	AAVLGHAGPAAVESGRAFKELGFD	SLTAVELRNRLNAATALRRLPATLIFDYPDPTVLARYLR
ORF14_pAC03	AAVLGYAGPDDVDAARGFLDLGFD	SLTAVDLRNRLTASAGLRLPVTLIFDYPSPALAAAYLA
ORF15_pAC01	ADVLGHGSPDAIDPEQAFSELGFD	SLTAVELRNRLGAAIGRRLPATLIFDHPASLTLARHLS
ORF15_pAC02	AAVLGYASPEAVEKDSSFRELGFD	SLTAVELRNRLGAAATGLRRLPATLVFDYPTSAVLADHLR
ORF15_pAC03	AQVLGHSGAAATEPGSAFKELGFD	SLTAVELRNRLGAVTGLRRLPATLIFDYPTEALSGHLR
ORF16_pAC01	AAVLGYAGPDAVEAGRAFKEGFD	SLTSVELRNRLNAASGLKLPPTLVFDHTPTVLARHLR
ORF16_pAC02	ATALGHPTTDEVGAGRAFKEGFD	SLIALELRNRLNAATGLRRLPATLVFDHTPTILAEFLR
ORF17_pAC01	AAVLGYPGPEAVDPGRAFKELGFD	SLTAVELRNRLGSATGVRLPATLVFDYPTPNALSAFLR
ORF17_pAC02	AAVLGHATPDAVEPTRAFKDLGFD	SLTAVEFRNRLGATAGIRLPATLVFDYPTPTVLAGYLK
ORF17_pAC03	AAVLGHASTDEVADRAFKEGFD	SLTSVELRNRLGATTGERLSATLVFDYPTPHALAEFLR
ORF17_pAC04	AAVLGFAGPEAVDPARSFSEVGF	SLTAVELRNRLGAATGVRLPATLVFDYPTDALVEYLR
ORF18_pAC01	AAVLGLAGPEAVDPARSFSEVGF	SLTAVELRNRLGAATGVRLPATLVFDYPTSLALADFLG
ORF18_pAC02	AAVLAYPSPDAVGESQEFLELGLD	SLTAVELRNQLNAATGLRRLPATLLFDHTPALVAERLR
	: . * : * : * : * * * : : : : : * . : * : * : * . : :	

Figure 8

```
ORF18_pTE02      ---RGDTRPGLVCFSSILSISG----PHQ-----YARFASAFRGRRDVHALGAPG--F
AAF71777|NYST    MTTSTEESLWARCFHPAPAAPVRLFCFPHAGGSASFYFPVSAQLSSVAEVFAIQYPGRQD
                   :      ** . : .      **      * . : : . : * : * : **

ORF18_pTE02      LRGEQLPSATDAVIEAQAEAVLRHADGAPFVLLGHSCGGMLAHAVAGRLESEG-----
AAF71777|NYST    RRKEAGVSDLATLADQVYDALRPLLKERPSTFFGHSCGMATLAFEVARRFEADDGDLVRLF
                   * * * * : : : : * : : * * * * : : * * * * : :

ORF18_pTE02      ----VFPQALVMIDIYSHDDDAIIGIQPGLSEGMDERQDTYVPVDDNRLLAMGAYFRLF
AAF71777|NYST    ASGRRAPSRVREEAVHRRSDDGIVEELK-LLAGTNTALLGDEEILRMILPAIRSDYQAIE
                   * . : : : : * * * * : * * : . : * * : : : :

ORF18_pTE02      GWK--PEVVKTPLLVRAGERFFDWTRSTDGDWRSYWDLDHTALDVPGNHFTMMEEHAPT
AAF71777|NYST    TYRCPPDVTVRAPLTVLTGDRPKTSLDEAEAWRGHTTGDFDLKVLPGGHF-FVSSEAPA
                   : : * : * . . * * : * * . : . . * * : * . : * * : * * : * :

ORF18_pTE02      TAQAVEGWLDTTG
AAF71777|NYST    IIDLLRAHLAGNG
                   : : . . * . *
```


Figure 9

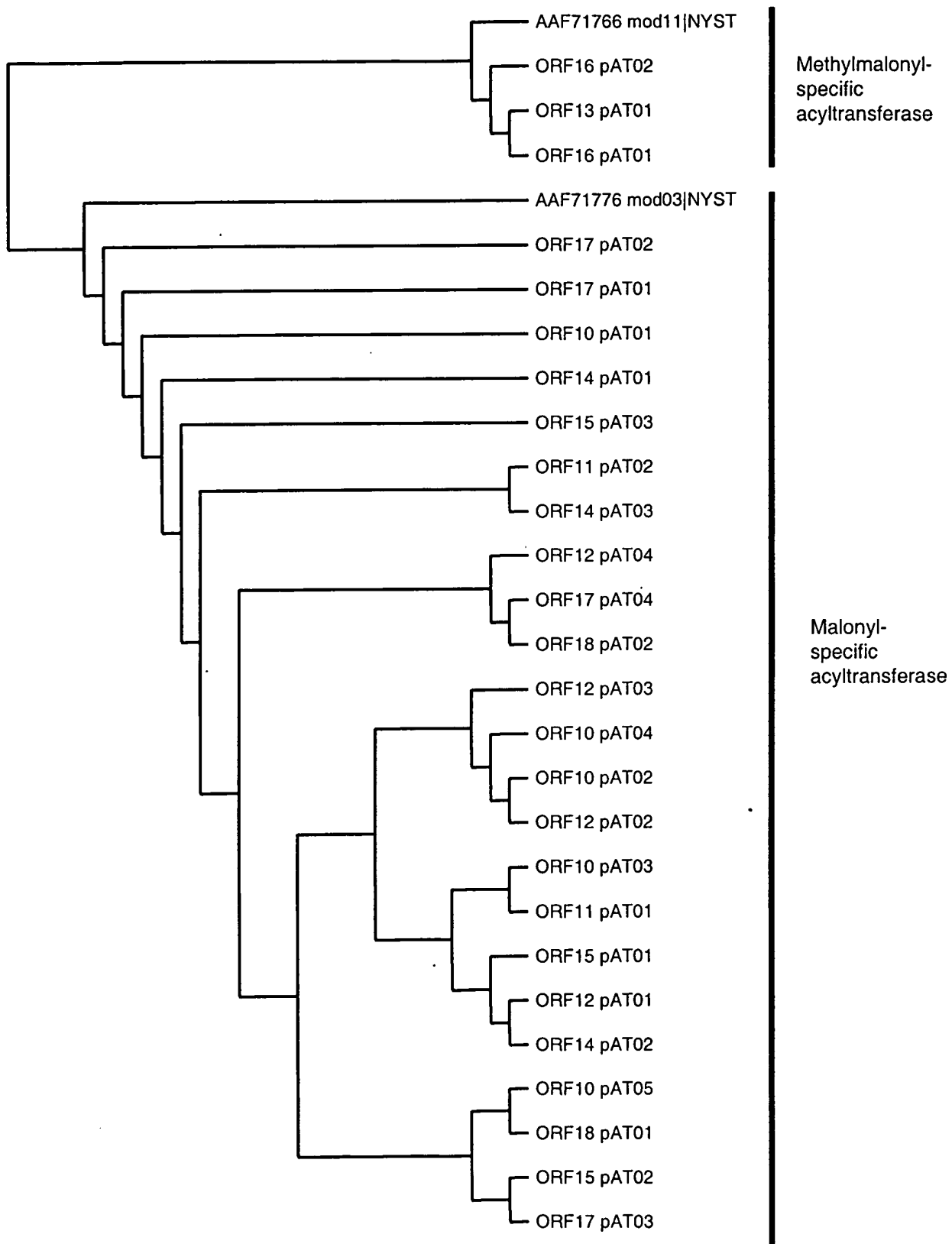


Figure 11

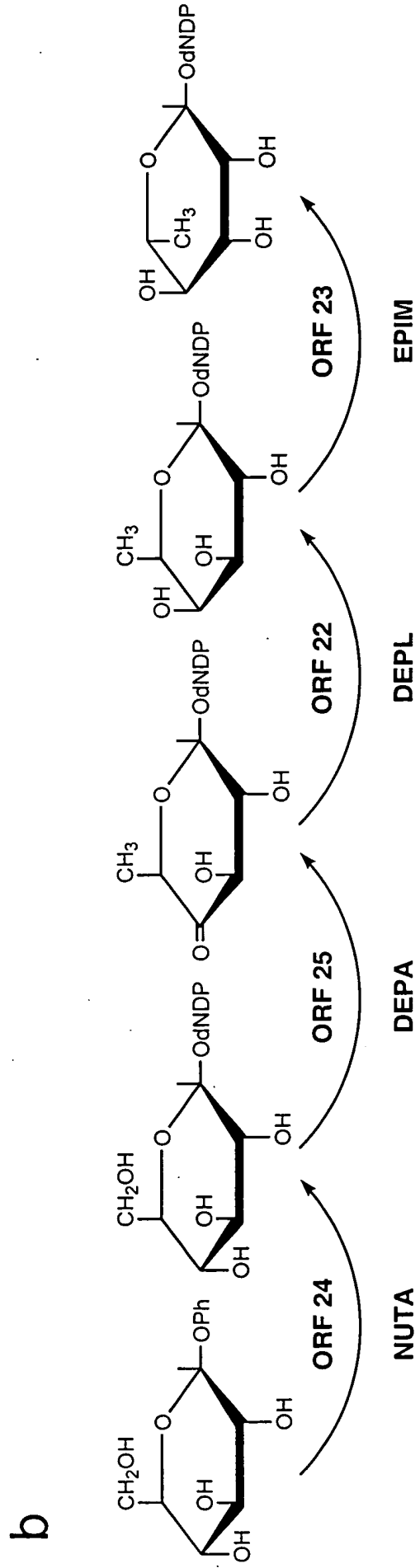
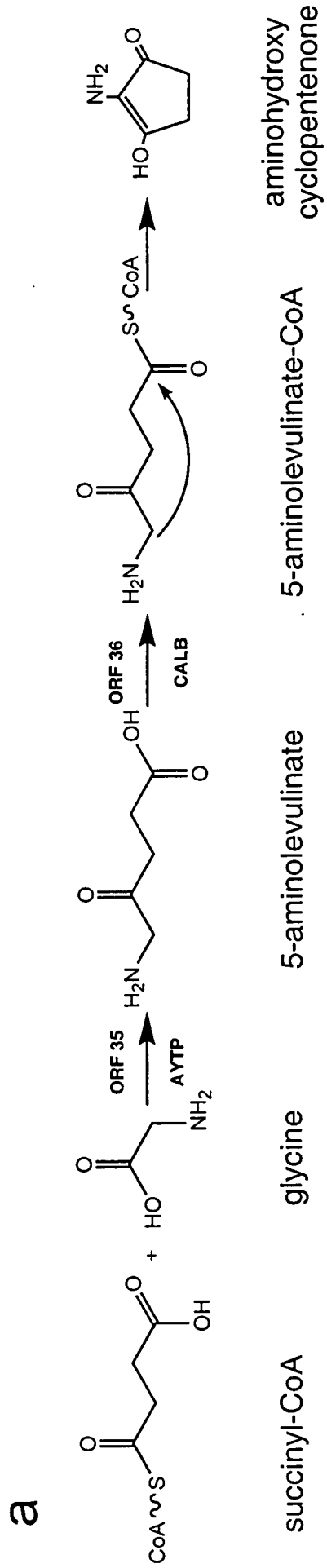


Figure 12c

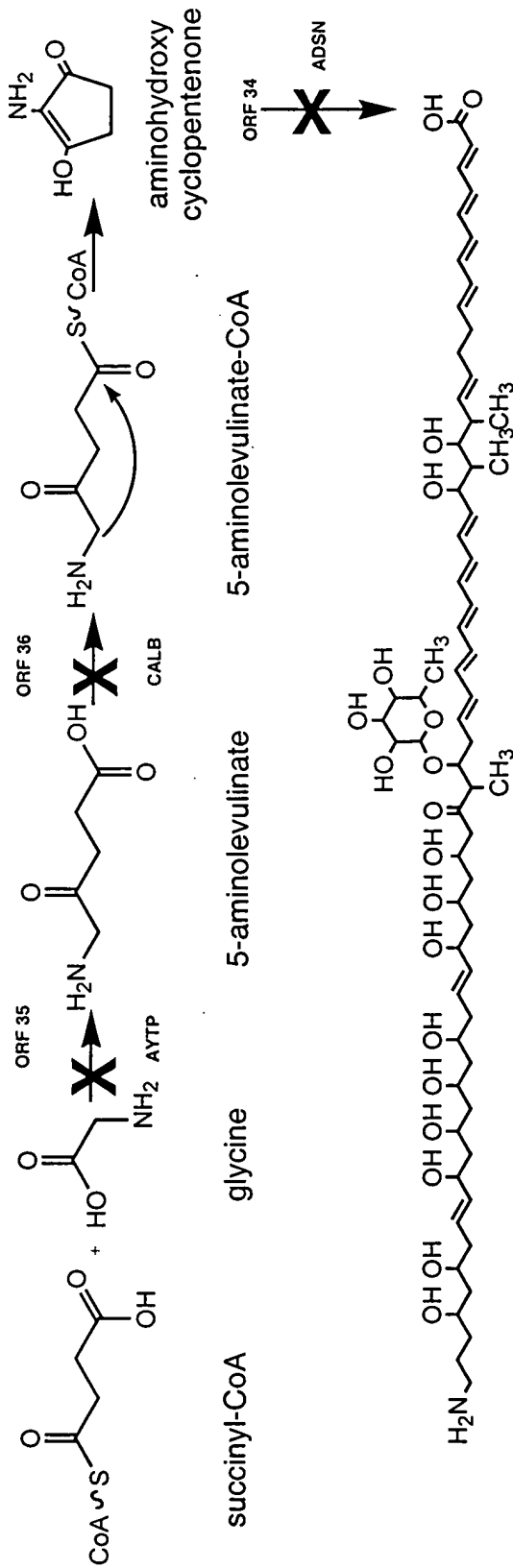


Figure 12d

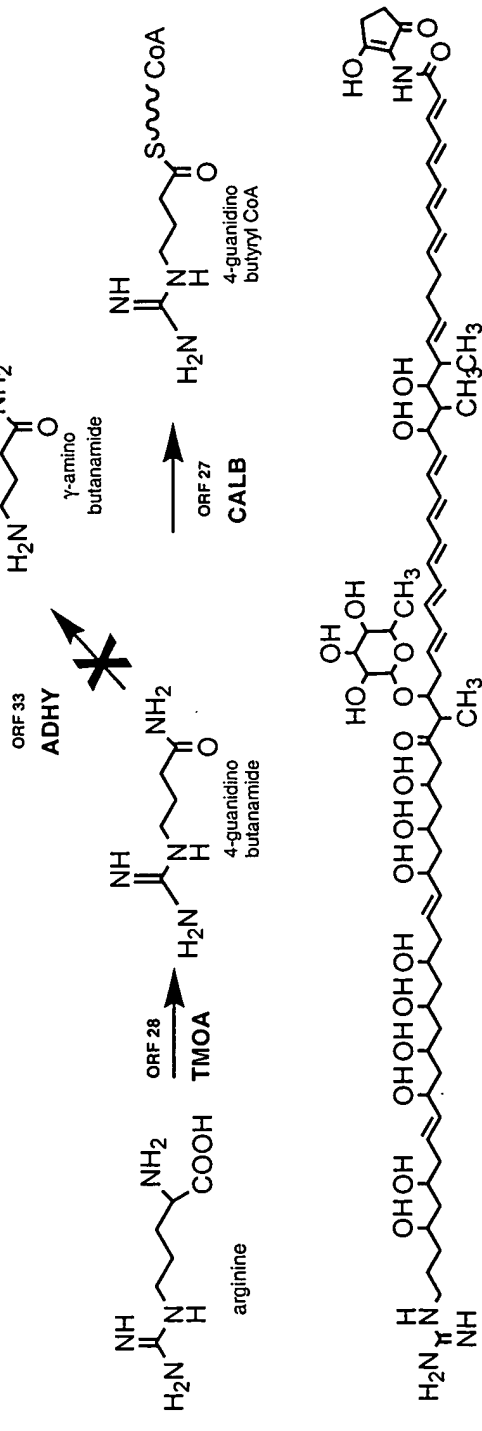


Figure 12e

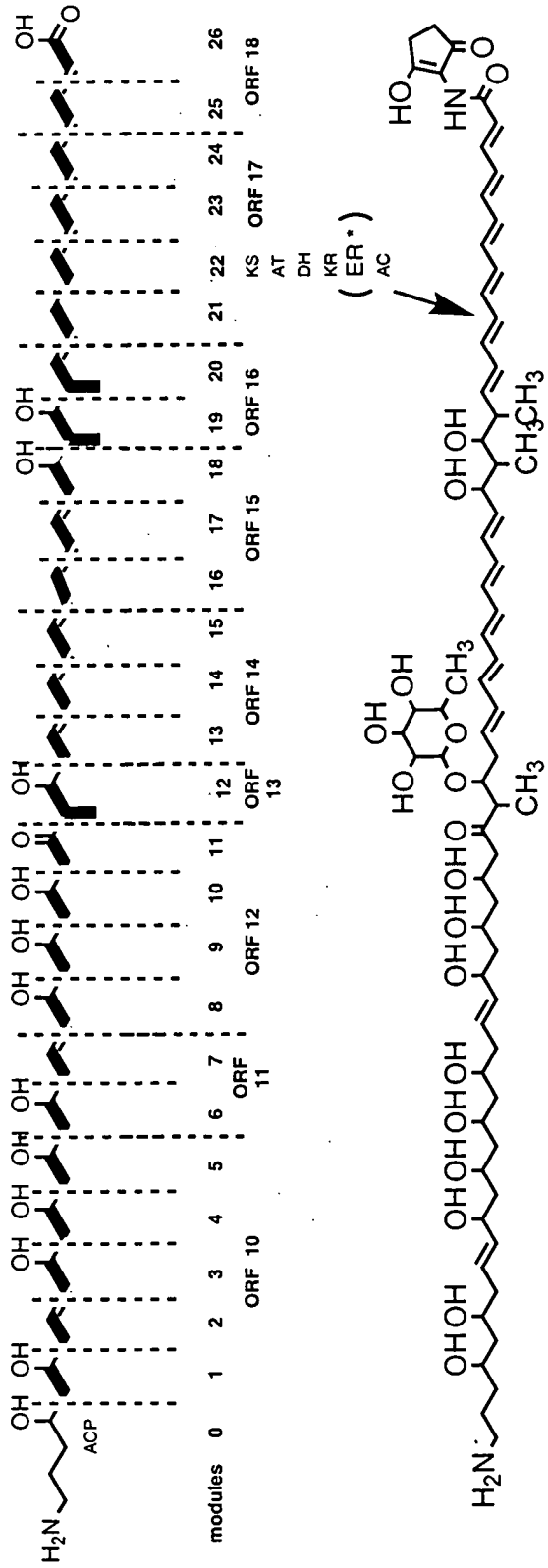
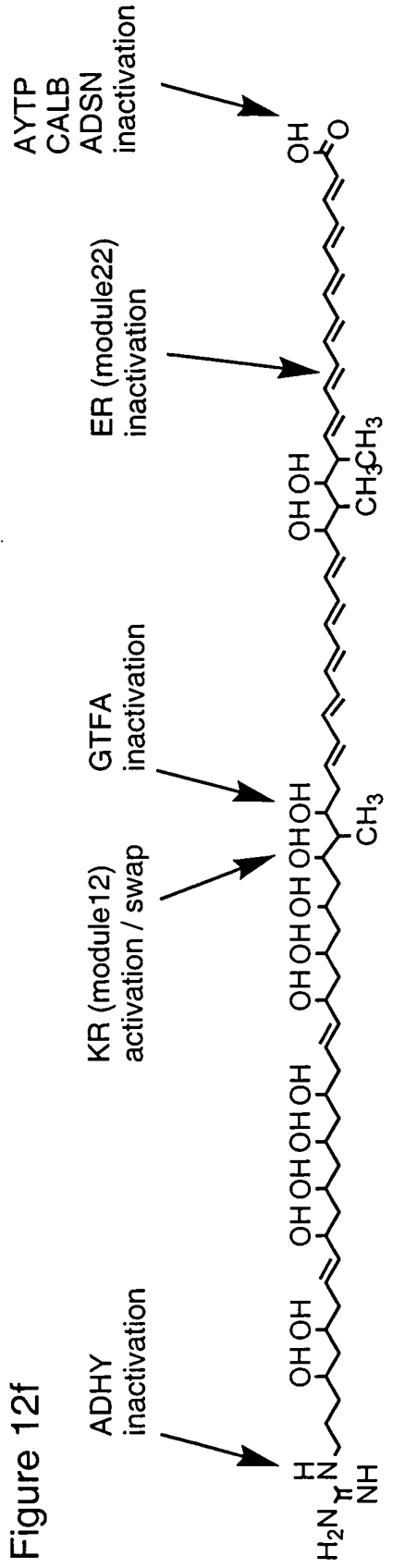


Figure 12f

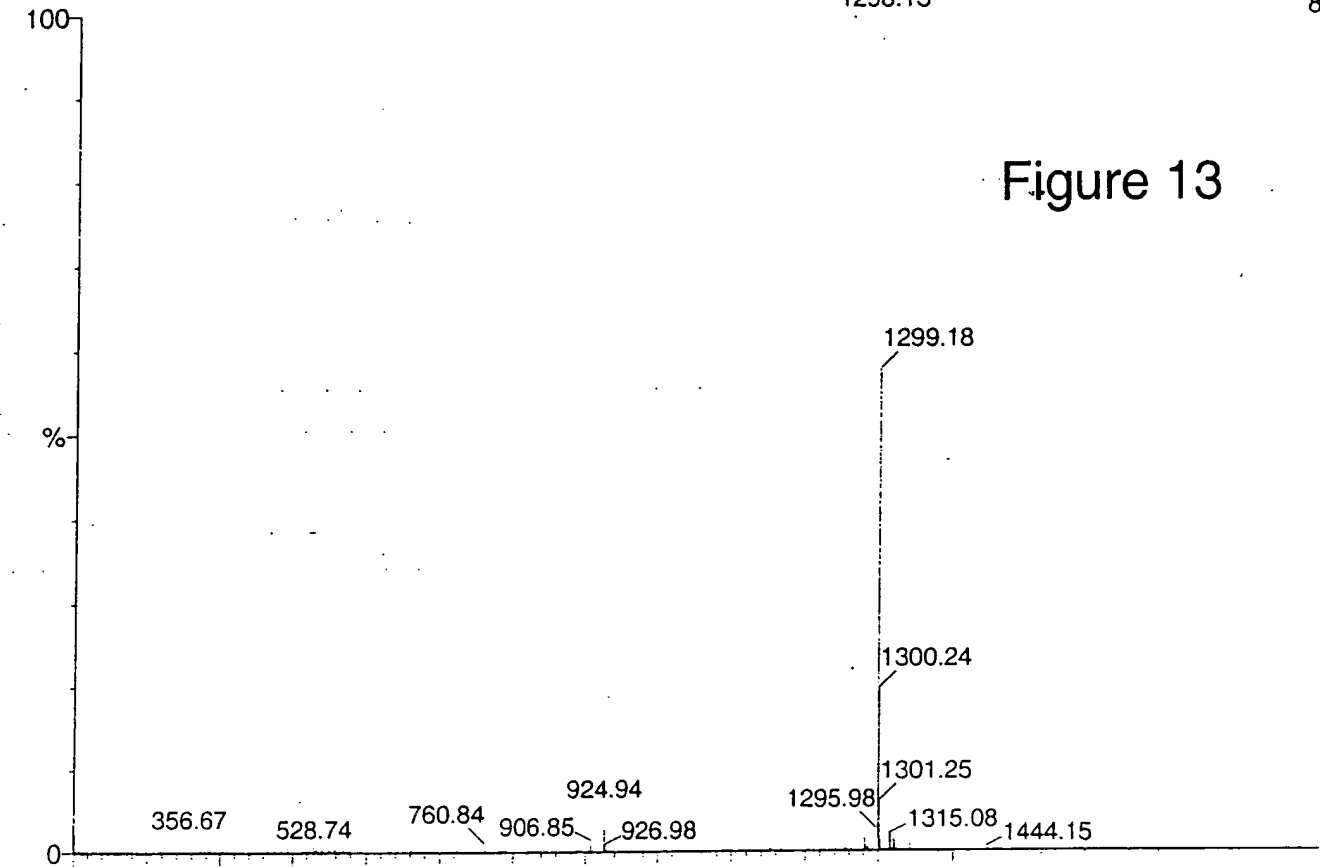


023X04QB1_R1

023QBA0704c01_R1 1194 (31.880) Cm (1185:1207)

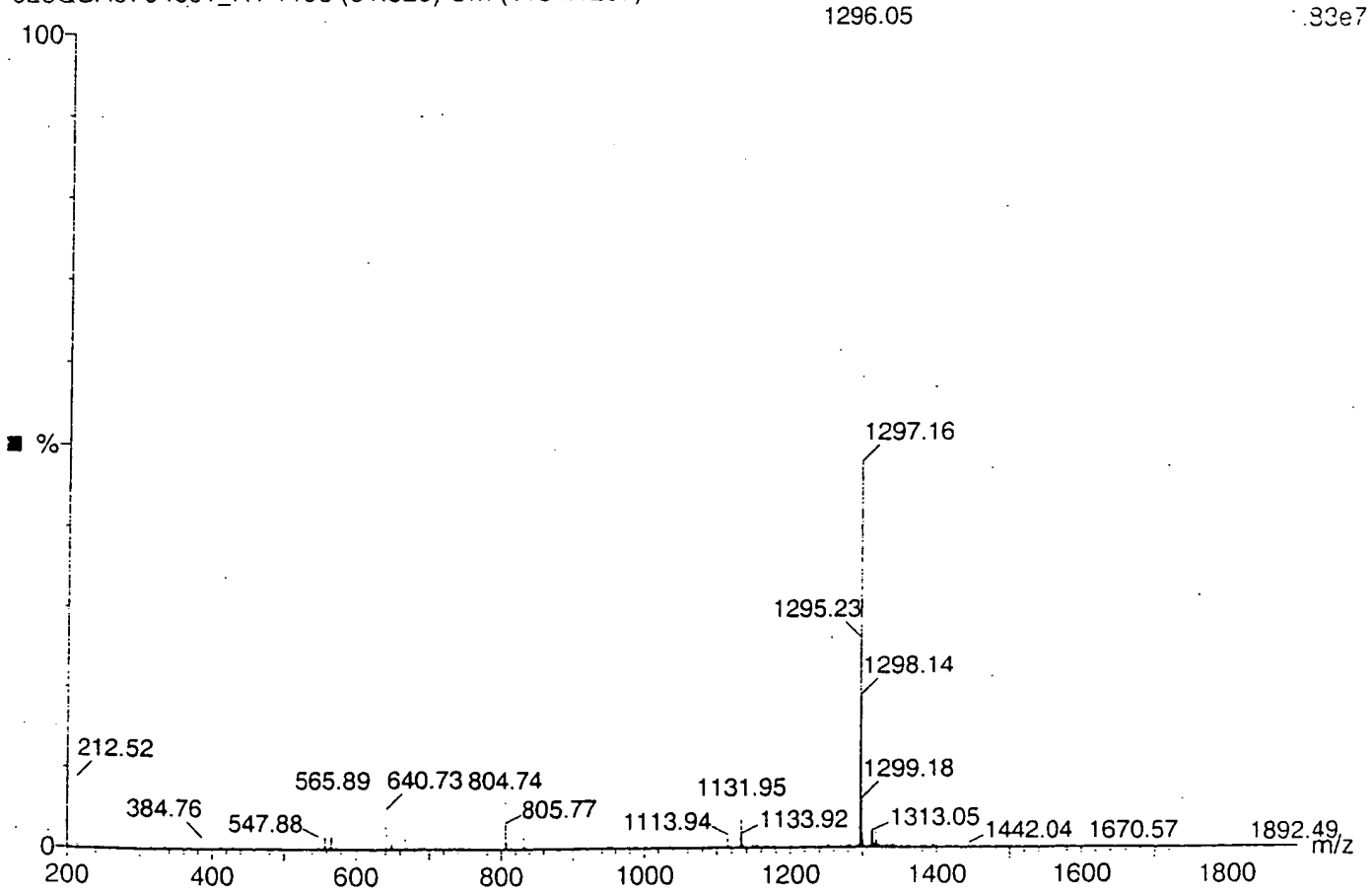
2: Scan ES+
8.34e7

Figure 13



023QBA0704c01_R1 1196 (31.920) Cm (1184:1207)

1: Scan ES-
1.33e7



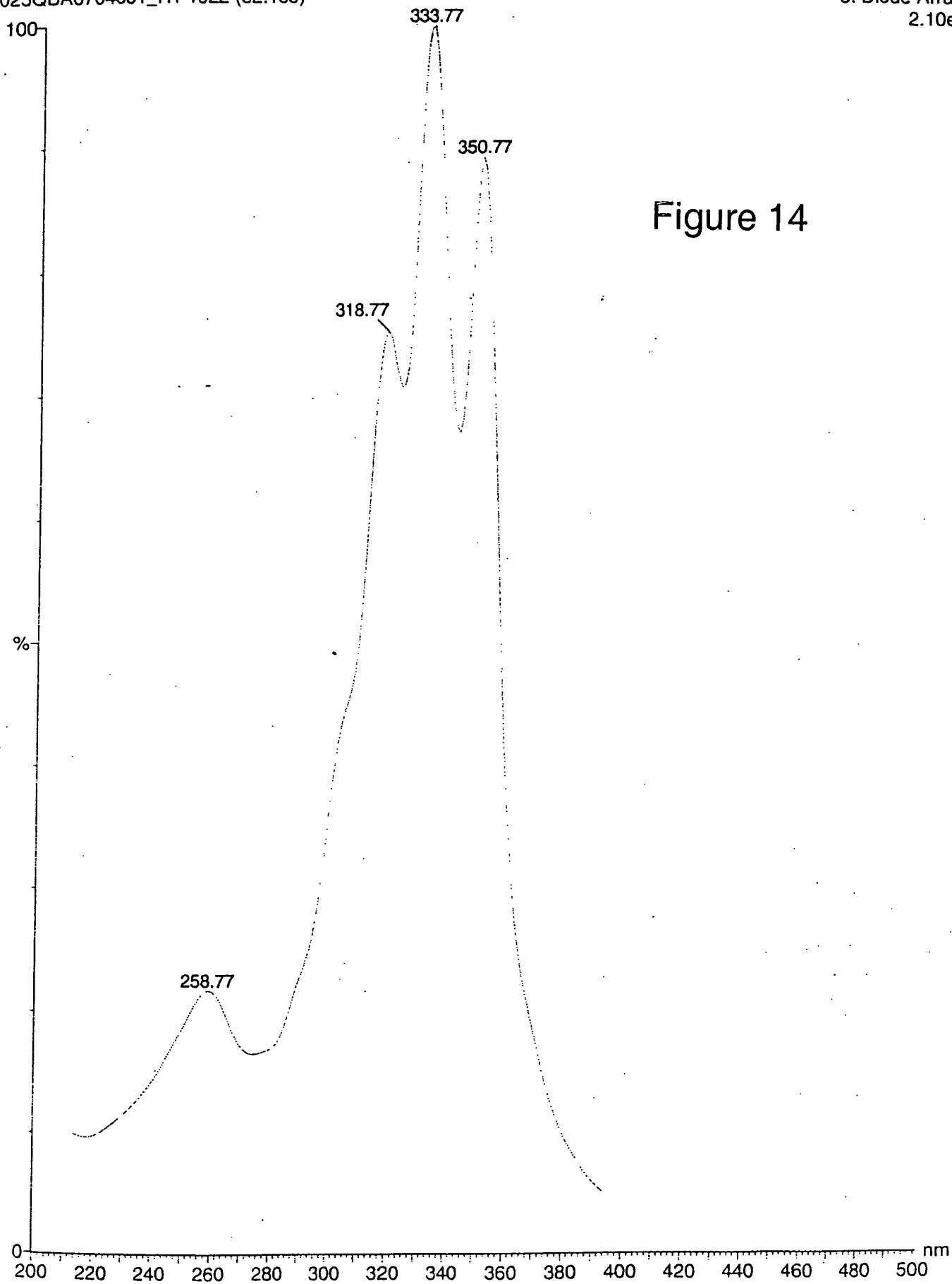


Figure 14

ECO02301_proton_MeOH_Spinning

exp2 s2pul

```
SAMPLE DEC. & VT
date Sep 24 2002 dfrq 125.674
solvent CD300 dn C13
file /export/home/~ dpwr 30
nmr1/ECO02301/ECO~ dof 0
02301_MeOH_proton~ dm nnn
spinning.fid dnm c
ACQUISITION dmf 200
sfrq 499.752 dseq 1.0
tn H1 dres n
at 1.892 homo PROCESSING
np 30272 wifile
sw 8000.0 wfile
fb not used proc ft
bs 32 fn not used f
tpwr 59 math
pw 5.5 werr 0
dl 0 wexp 0
tof 32 wbs
ct 32 wnt
alock n
gain 26
FLAGS
f) n
in n
dp y
hs nn
SP DISPLAY -122.1
WP 3836.9
VS 5471
SC 0
WC 250
HZmm 15.35
IS 7547.31
RFI 1509.3
RFP 0
TH 5
INS 3.000
nm cdc ph
```

Figure 15a

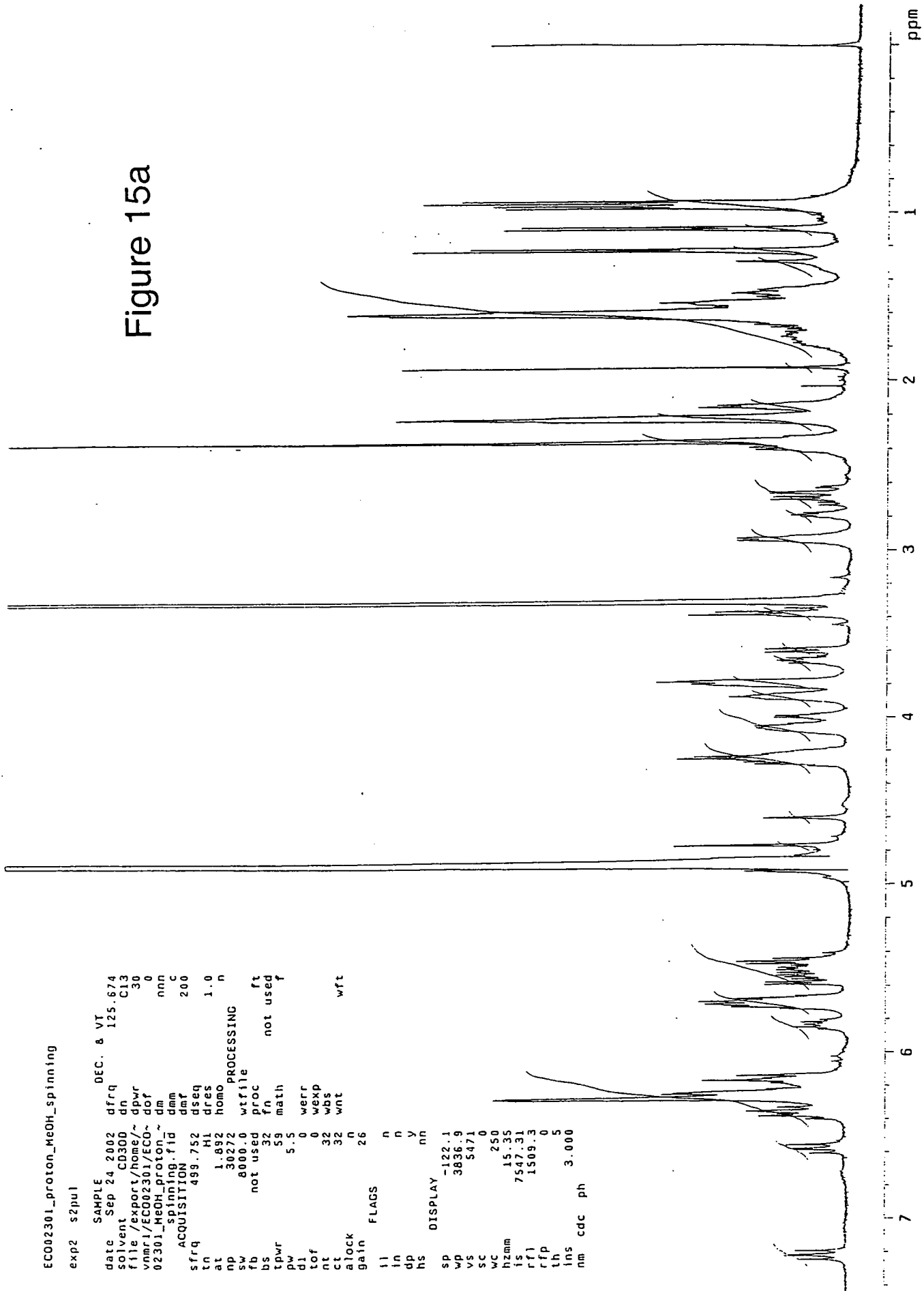
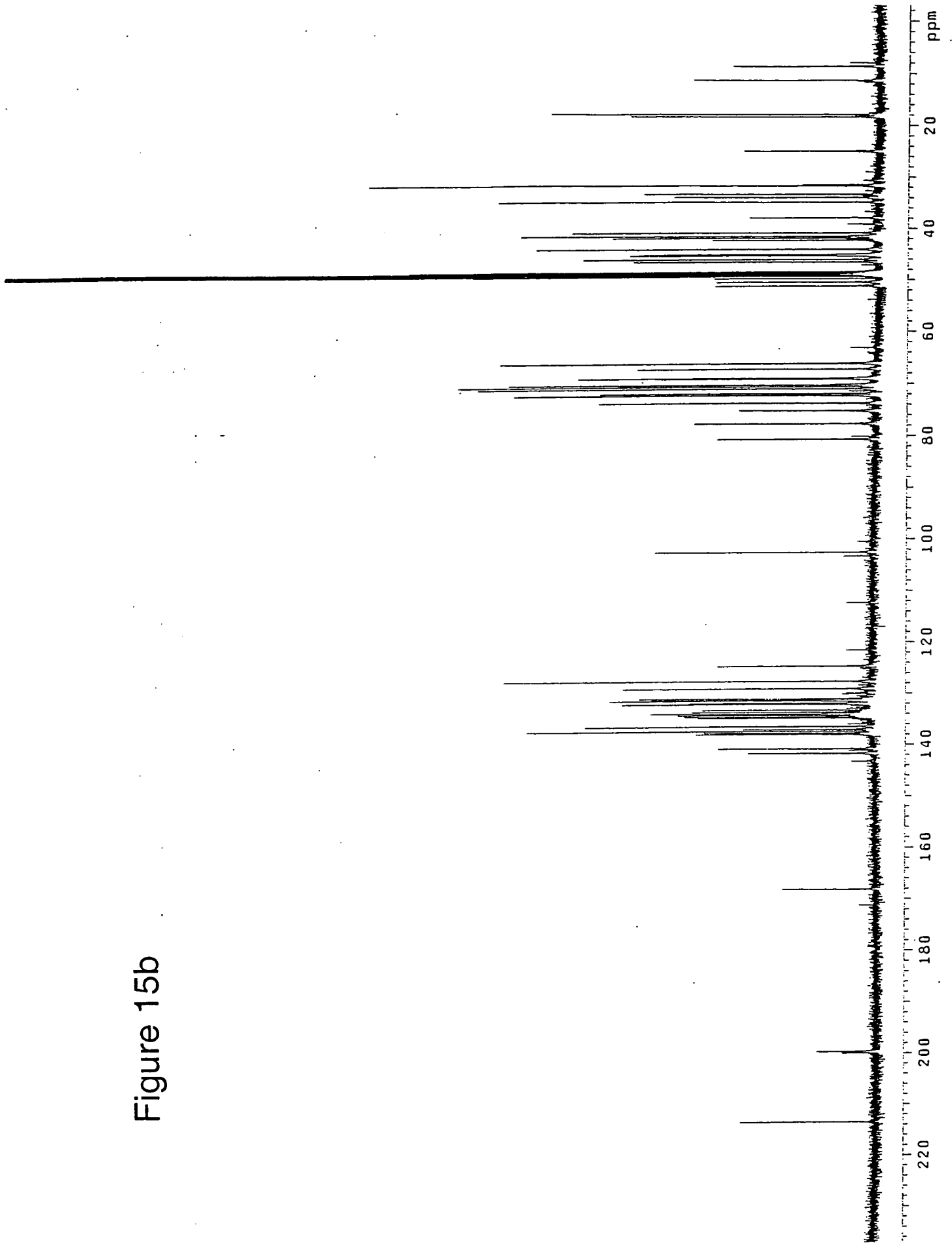


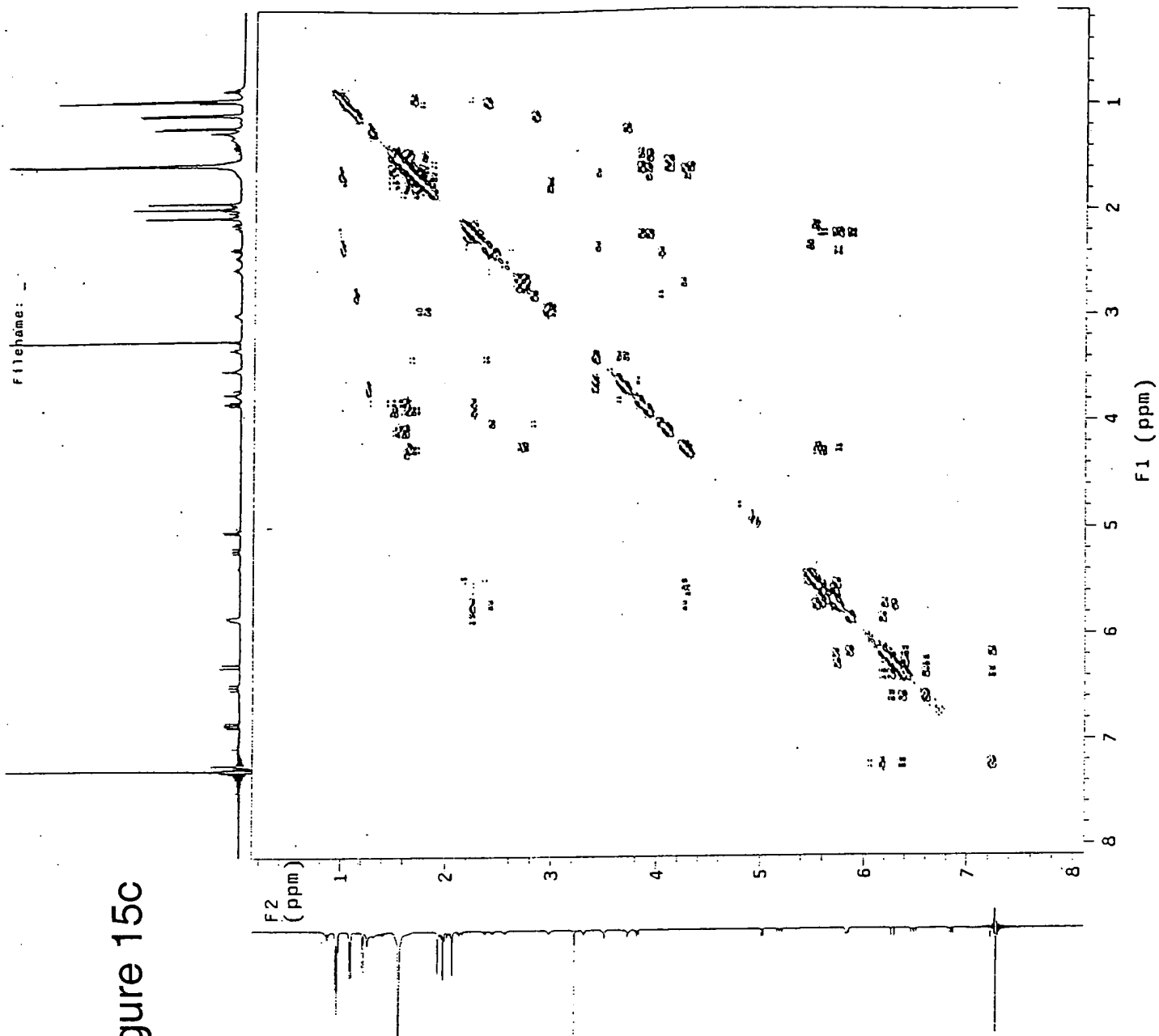
Figure 15b



STANDARD PROTON PARAMETERS
 Pulse Sequence: gDQCOSY
 Solvent: CD300
 Ambient temperature
 File: ECO_02301_gDQCOSY_CD300_high_res
 INOVA-500 "resonance"

Relax. delay 1.000 sec
 Acq. time 0.128 sec
 Width 3988.0 Hz
 2D Width 3988.0 Hz
 32 repetitions
 2 x 500 increments
 OBSERVE H1, 499.7495714 MHz
 DATA PROCESSING
 Sg. sine bell 0.096 sec
 Shifted by -0.064 sec
 F1 DATA PROCESSING
 Sg. sine bell 0.037 sec
 Shifted by -0.025 sec
 FT size 8192 x 8192
 Total time 10 hr, 48 min, 6 sec

Figure 15c

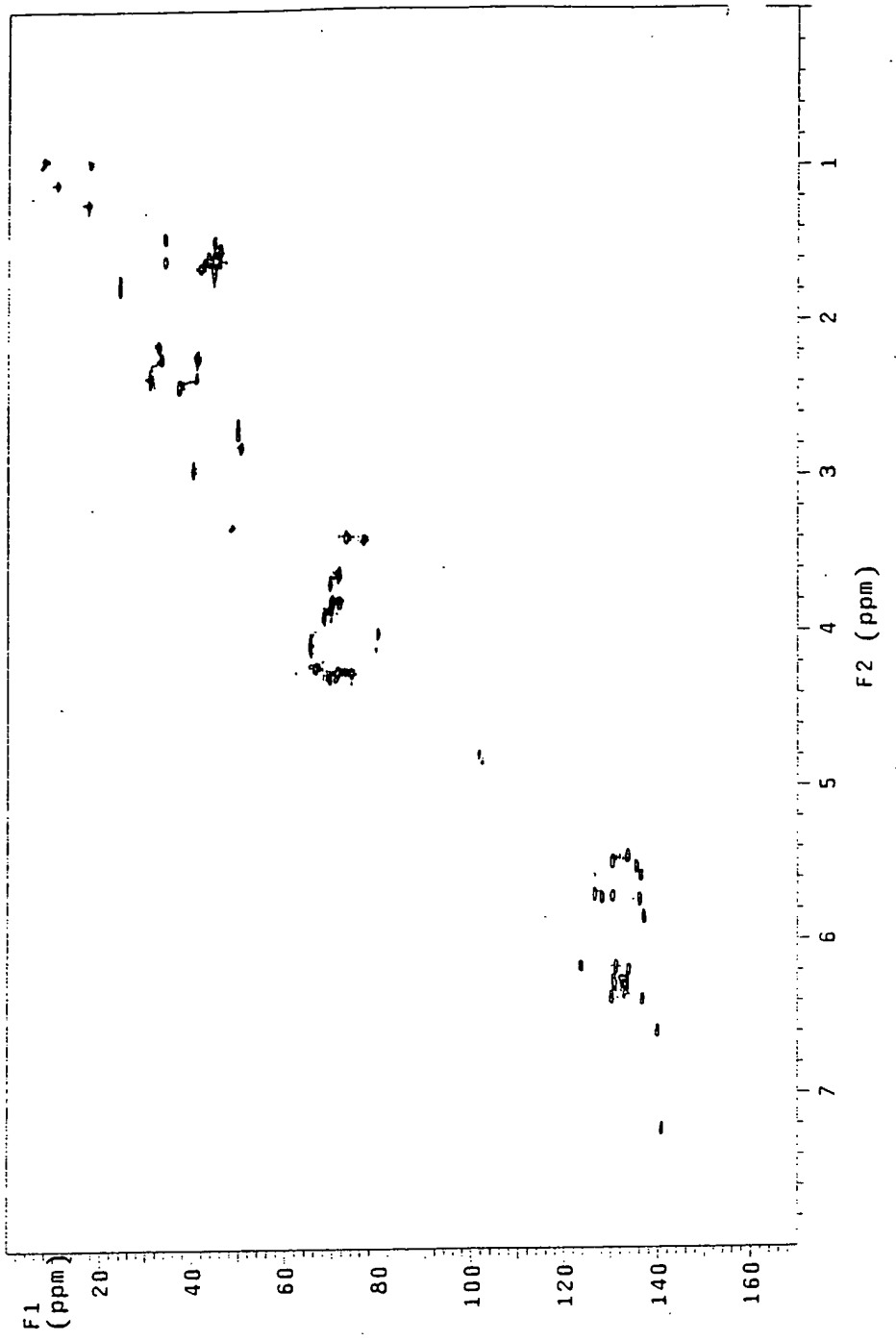


Filename: -

STANDARD PROTON PARAMETERS

Pulse Sequence: gHSQC
Solvent: CD300
Ambient temperature
File: ECO-02301_CD300_gHSQC_12_02
INOVA-500 "resonance"
Relax. delay 1.000 sec
Acq. time 0.128 sec
Width 4001.6 Hz
2D Width 21361.6 Hz
64 repetitions
2 x 128 increments
OBSERVE H1, 499.7495714 MHZ
DECOUPLE C13, 125.6727810 MHZ
Power 40 dB
on during acquisition
off during delay
v40 fd471g modulated
DATA_PROCESSING
Gauss apodization 0.059 sec
F1 DATA PROCESSING
Gauss apodization 0.022 sec
FT size 2048 x 2048
Total time 5 hr, 28 min, 9 sec

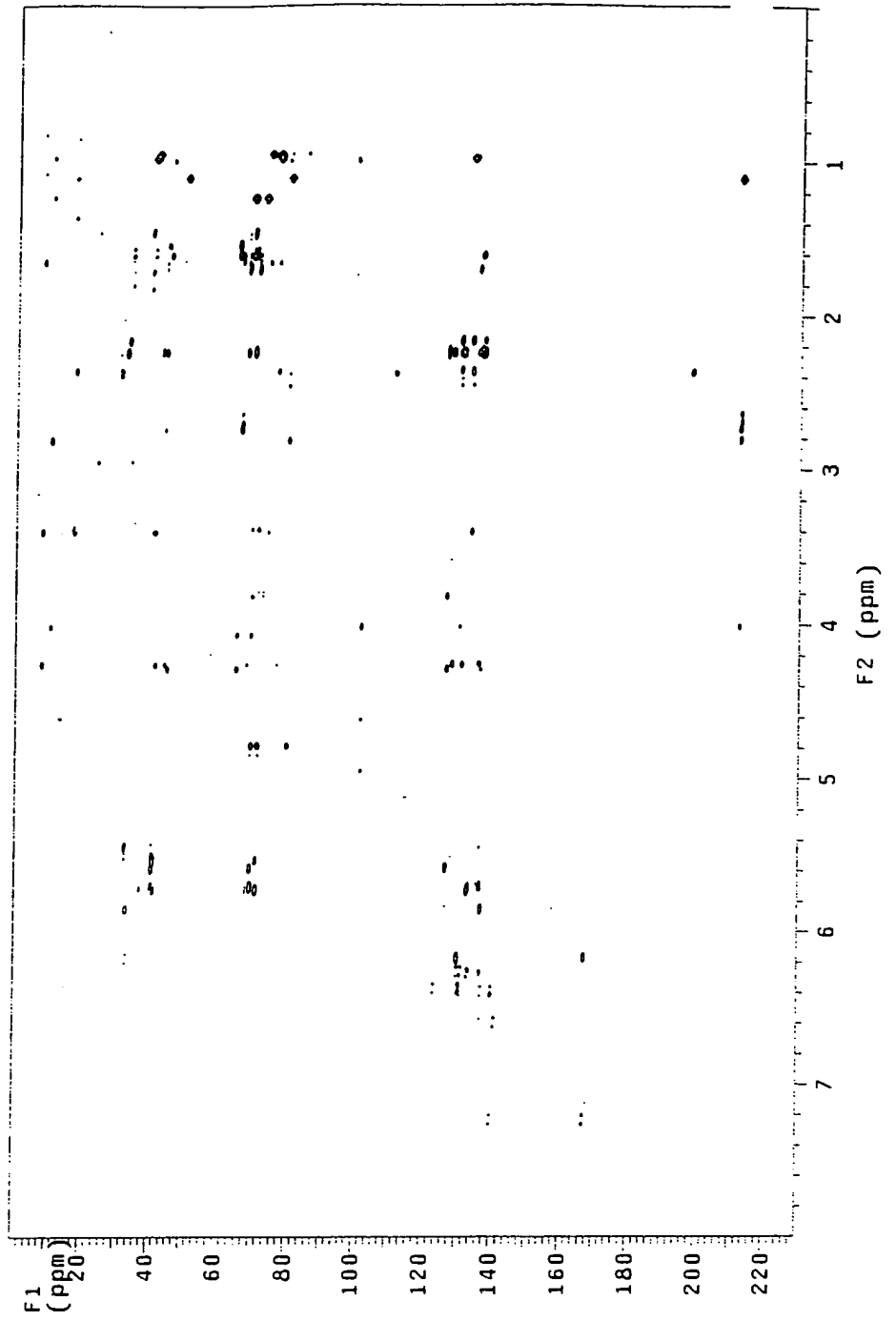
Figure 15d



STANDARD PROTON PARAMETERS

Filename: --
Pulse Sequence: gHMBC
Solvent: CD300
Ambient temperature
File: EC002301_CD300_gHMBC_12_02
INOVA-500 "resonance"
Relax. delay 1.000 sec
Acq. time 0.128 sec
Width 4001.6 Hz
20 Width 28901.7 Hz
128 repetitions
400 increments
OBSERVE H1, 499.7495714 MHz
DATA PROCESSING
Sine bell 0.064 sec
F1 DATA PROCESSING
Sine bell 0.007 sec
FT size 2048 x 4096
Total time 17 hr, 18 min, 49 sec

Figure 15e



Filename: _

STANDARD PROTON PARAMETERS

Pulse Sequence: TOCSY
Solvent: CD300
Ambient temperature
File: 02301_CD300_TOCSY_mix_08
INOVA-500 "resonance"
Relax. delay 1.000 sec
Mixing 0.080 sec
Acq. time 0.128 sec
Width 4001.6 Hz
2D Width 4001.6 Hz
32 repetitions
2 x 200 increments
OBSERVE F1, 499.7495714 MHz
DATA PROCESSING
Gauss apodization 0.059 sec
F1 DATA PROCESSING
Gauss apodization 0.046 sec
F1 size 2048 x 2048
Total time 4 hr, 29 min, 30 sec

Figure 15f

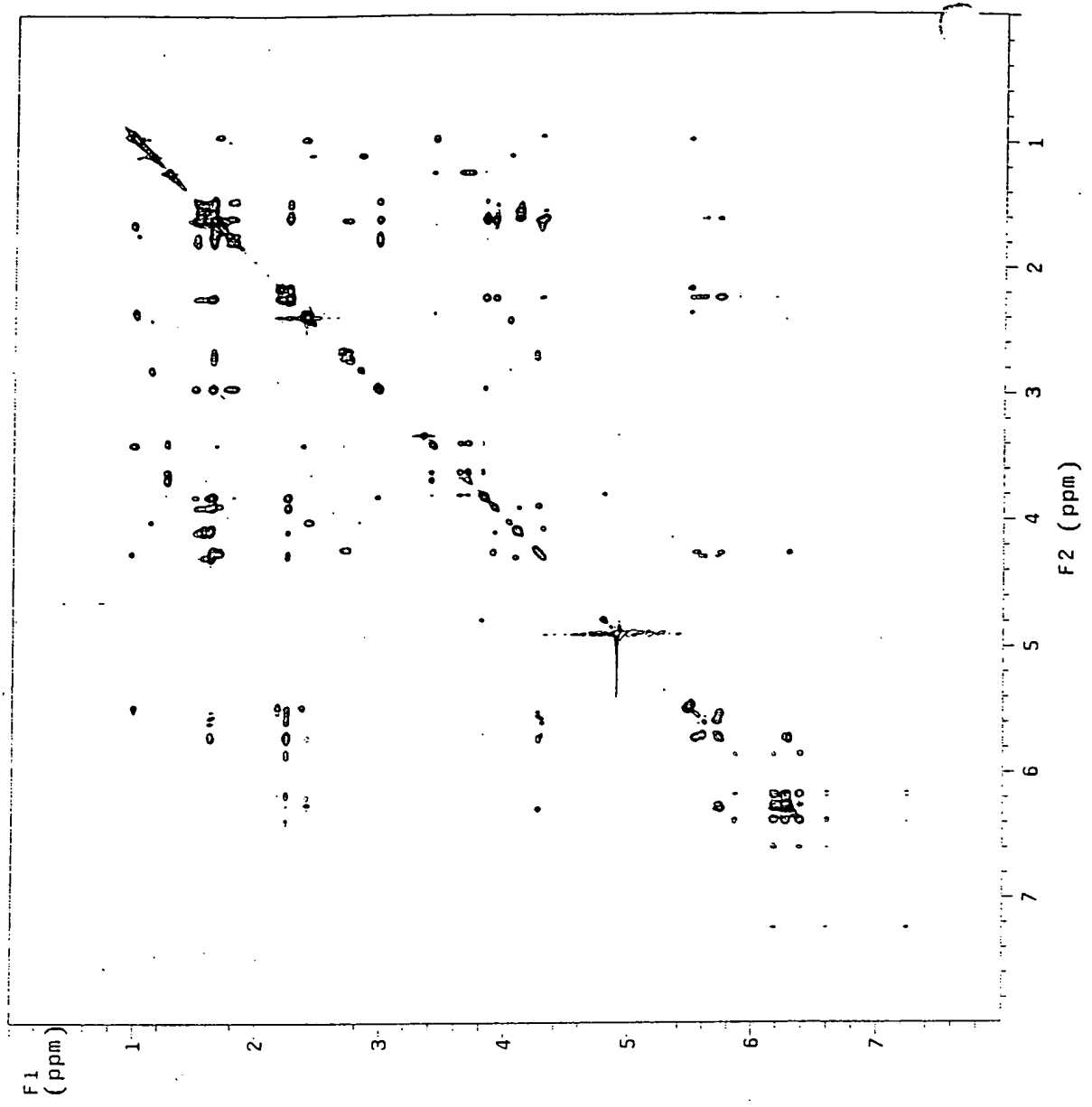


Figure 16

**Effect of Compound 2(a)
on systemic Candidiasis *in vivo***

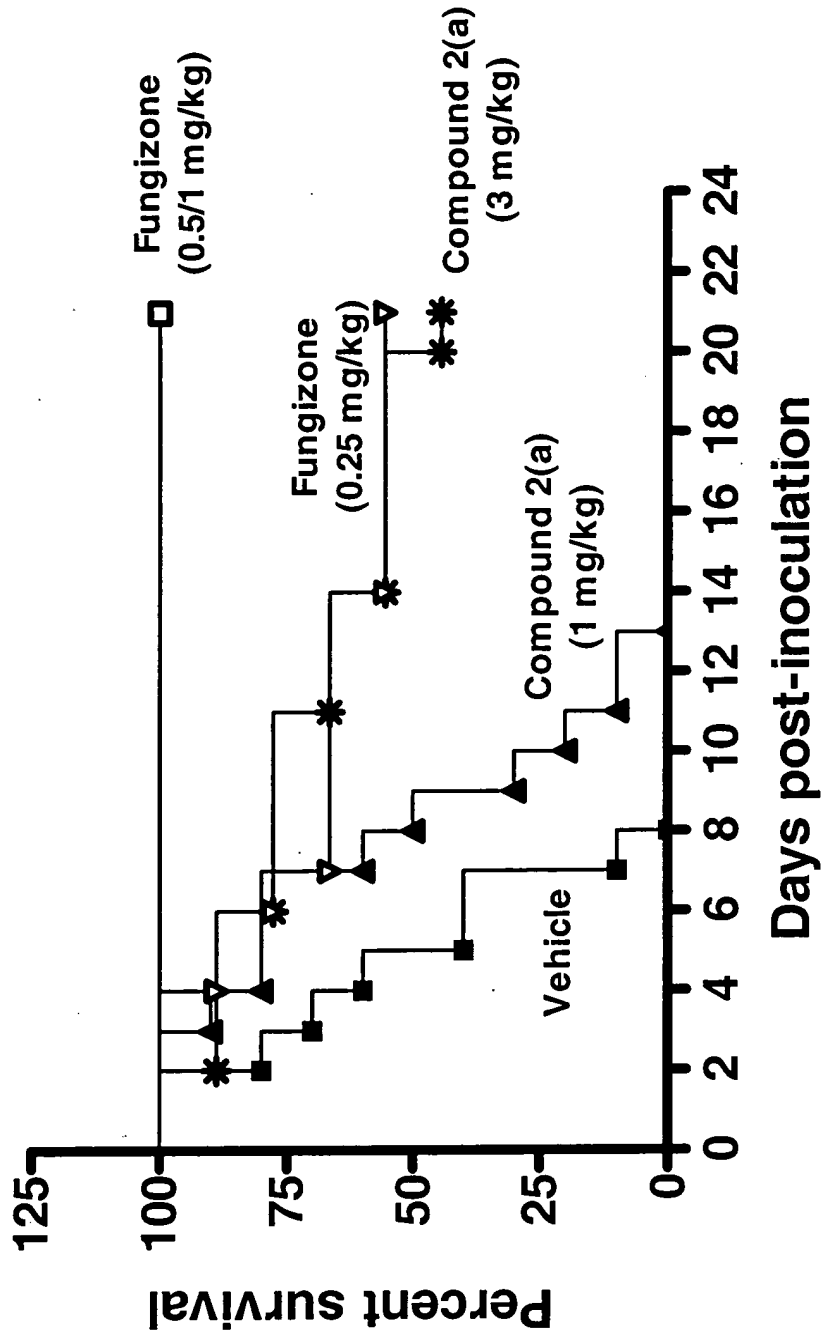


Figure 17a

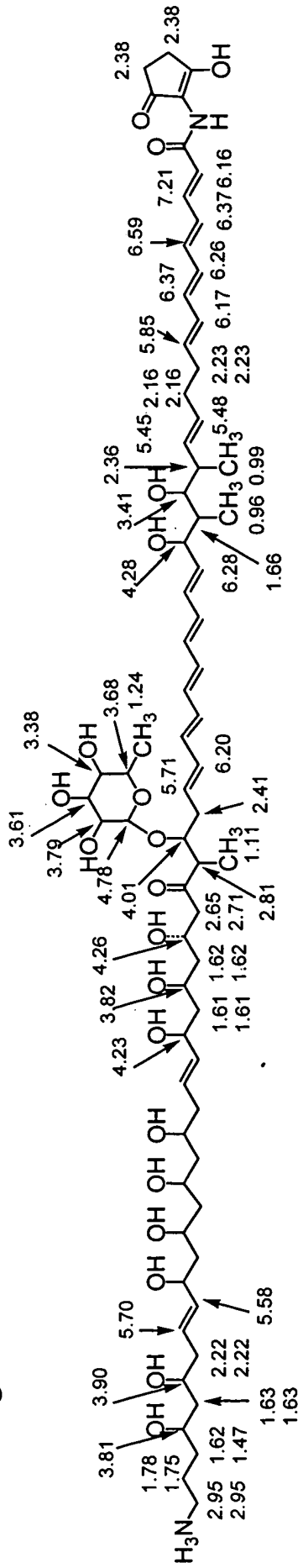


Figure 17b

